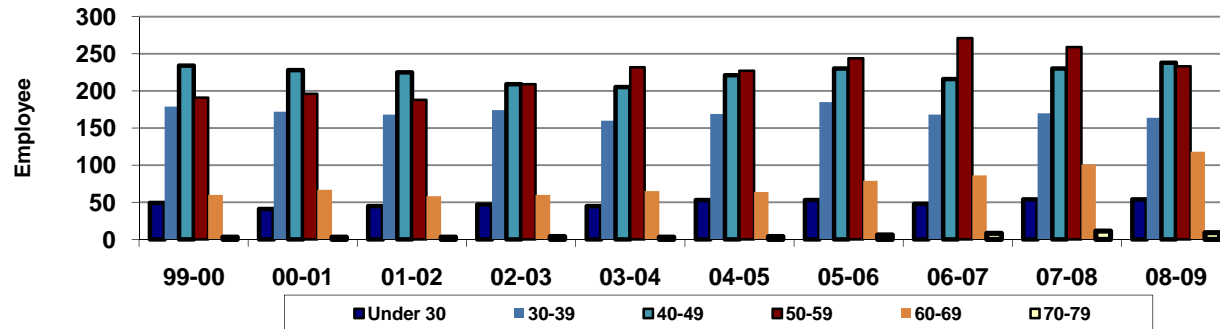


## Green River Community College Annual Employee Age (College Total)



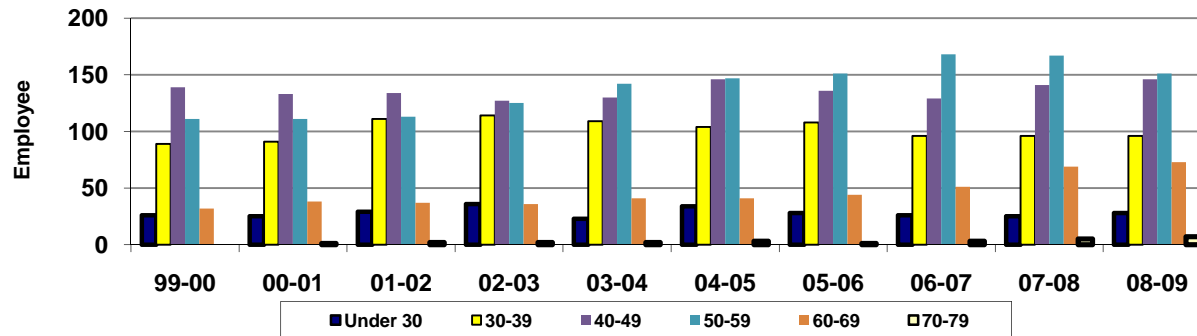
<u>Year</u>	<u>99-00</u>	<u>00-01</u>	<u>01-02</u>	<u>02-03</u>	<u>03-04</u>	<u>04-05</u>	<u>05-06</u>	<u>06-07</u>	<u>07-08</u>	<u>08-09</u>
<b>Under 30</b>	49	41	45	47	45	53	53	48	54	54
<b>30-39</b>	179	172	168	174	160	169	185	168	170	164
<b>40-49</b>	234	228	225	209	205	221	230	216	230	238
<b>50-59</b>	191	196	188	209	232	227	244	271	259	233
<b>60-69</b>	60	67	58	60	65	64	79	86	101	118
<b>70-79</b>	3	3	3	4	3	4	6	8	11	9
<b>80 &amp; Over</b>	1					1				1
<b>Total</b>	<b>717</b>	<b>707</b>	<b>687</b>	<b>703</b>	<b>710</b>	<b>739</b>	<b>797</b>	<b>797</b>	<b>825</b>	<b>817</b>
(Not Reporting)	78	78	94	70	57	52	21	17	21	29

<b>% Under 30</b>	6.8%	5.8%	6.6%	6.7%	6.3%	7.2%	6.6%	6.0%	6.5%	6.6%
<b>% 30-39</b>	25.0%	24.3%	24.5%	24.8%	22.5%	22.9%	23.2%	21.1%	20.6%	20.1%
<b>% 40-49</b>	32.6%	32.2%	32.8%	29.7%	28.9%	29.9%	28.9%	27.1%	27.9%	29.1%
<b>% 50-59</b>	26.6%	27.7%	27.4%	29.7%	32.7%	30.7%	30.6%	34.0%	31.4%	28.5%
<b>% 60-69</b>	8.4%	9.5%	8.4%	8.5%	9.2%	8.7%	9.9%	10.8%	12.2%	14.4%
<b>% 70-79</b>	0.4%	0.4%	0.4%	0.6%	0.4%	0.5%	0.8%	1.0%	1.3%	1.1%
<b>% 80 &amp; Over</b>	0.1%					0.1%				0.1%

Source: SBCTC PMIS (EMPYRQ, LU\_AGE\_GROUP);  
EMP\_STAT\_PMIS <> 7 or <>8; GbyAGE\_GROUP (first)

Last updated on September 11, 2009  
GRCC • Research and Planning Office • Loan Spen

## Green River Community College Summer Quarter - Employee Age (College Total)



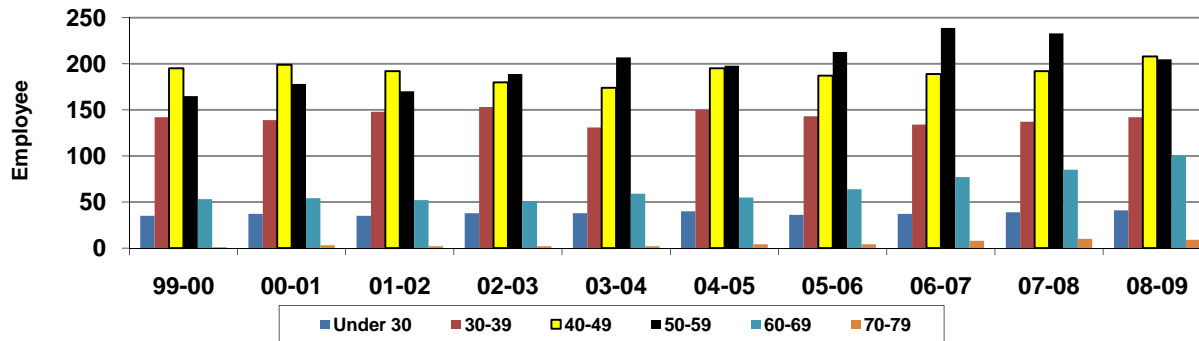
<u>Summer</u>	<u>99-00</u>	<u>00-01</u>	<u>01-02</u>	<u>02-03</u>	<u>03-04</u>	<u>04-05</u>	<u>05-06</u>	<u>06-07</u>	<u>07-08</u>	<u>08-09</u>
<b>Under 30</b>	26	25	29	36	23	34	28	26	25	28
<b>30-39</b>	89	91	111	114	109	104	108	96	96	96
<b>40-49</b>	139	133	134	127	130	146	136	129	141	146
<b>50-59</b>	111	111	113	125	142	147	151	168	167	151
<b>60-69</b>	32	38	37	36	41	41	44	51	69	73
<b>70-79</b>		1	2	2	2	3	1	3	5	7
<b>80 &amp; Over</b>										1
<b>Total</b>	<b>397</b>	<b>399</b>	<b>426</b>	<b>440</b>	<b>447</b>	<b>475</b>	<b>468</b>	<b>473</b>	<b>503</b>	<b>502</b>
(Not Reporting)	23	21	20	22	19	18	20	4	10	7

<b>% Under 30</b>	6.5%	6.3%	6.8%	8.2%	5.1%	7.2%	6.0%	5.5%	5.0%	5.6%
<b>% 30-39</b>	22.4%	22.8%	26.1%	25.9%	24.4%	21.9%	23.1%	20.3%	19.1%	19.1%
<b>% 40-49</b>	35.0%	33.3%	31.5%	28.9%	29.1%	30.7%	29.1%	27.3%	28.0%	29.1%
<b>% 50-59</b>	28.0%	27.8%	26.5%	28.4%	31.8%	30.9%	32.3%	35.5%	33.2%	30.1%
<b>% 60-69</b>	8.1%	9.5%	8.7%	8.2%	9.2%	8.6%	9.4%	10.8%	13.7%	14.5%
<b>% 70-79</b>		0.3%	0.5%	0.5%	0.4%	0.6%	0.2%	0.6%	1.0%	1.4%
<b>% 80 &amp; Over</b>										0.2%

Source: SBCTC PMIS (EMPYRQ, LU\_AGE\_GROUP);  
EMP\_STAT\_PMIS <> 7 or <>8; GbyAGE\_GROUP (Avg)

Last updated on September 11, 2009  
GRCC • Research and Planning Office • Loan Spen

## Green River Community College Fall Quarter - Employee Age (College Total)



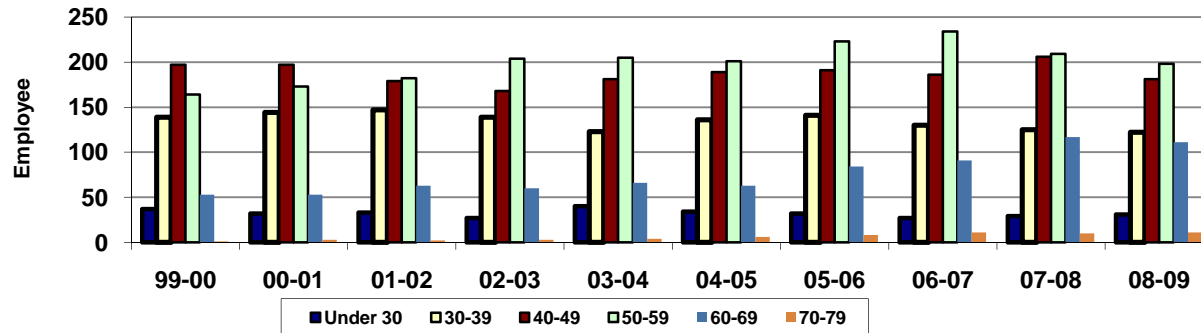
<b>Fall</b>	<b>99-00</b>	<b>00-01</b>	<b>01-02</b>	<b>02-03</b>	<b>03-04</b>	<b>04-05</b>	<b>05-06</b>	<b>06-07</b>	<b>07-08</b>	<b>08-09</b>
<b>Under 30</b>	35	37	35	38	38	40	36	37	39	41
<b>30-39</b>	142	139	148	153	131	150	143	134	137	142
<b>40-49</b>	195	199	192	180	174	195	187	189	192	208
<b>50-59</b>	165	178	170	189	207	198	213	239	233	205
<b>60-69</b>	53	54	52	51	59	55	64	77	85	100
<b>70-79</b>	1	3	2	2	2	4	4	8	10	9
<b>80 &amp; Over</b>	1					1				1
<b>Total</b>	<b>592</b>	<b>610</b>	<b>599</b>	<b>613</b>	<b>611</b>	<b>643</b>	<b>647</b>	<b>684</b>	<b>696</b>	<b>706</b>
(Not Reporting)	45	41	49	50	35	28	34	8	13	22

<b>% Under 30</b>	5.9%	6.1%	5.8%	6.2%	6.2%	6.2%	5.6%	5.4%	5.6%	5.8%
<b>% 30-39</b>	24.0%	22.8%	24.7%	25.0%	21.4%	23.3%	22.1%	19.6%	19.7%	20.1%
<b>% 40-49</b>	32.9%	32.6%	32.1%	29.4%	28.5%	30.3%	28.9%	27.6%	27.6%	29.5%
<b>% 50-59</b>	27.9%	29.2%	28.4%	30.8%	33.9%	30.8%	32.9%	34.9%	33.5%	29.0%
<b>% 60-69</b>	9.0%	8.9%	8.7%	8.3%	9.7%	8.6%	9.9%	11.3%	12.2%	14.2%
<b>% 70-79</b>	0.2%	0.5%	0.3%	0.3%	0.3%	0.6%	0.6%	1.2%	1.4%	1.3%
<b>% 80 &amp; Over</b>	0.2%					0.2%				0.1%

Source: SBCTC PMIS (EMPYRQ, LU\_AGE\_GROUP);  
EMP\_STAT\_PMIS <> 7 or <>8; GbyAGE\_GROUP (Avg)

Last updated on September 11, 2009  
GRCC • Research and Planning Office • Loan Spen

## Green River Community College Winter Quarter - Employee Age (College Total)



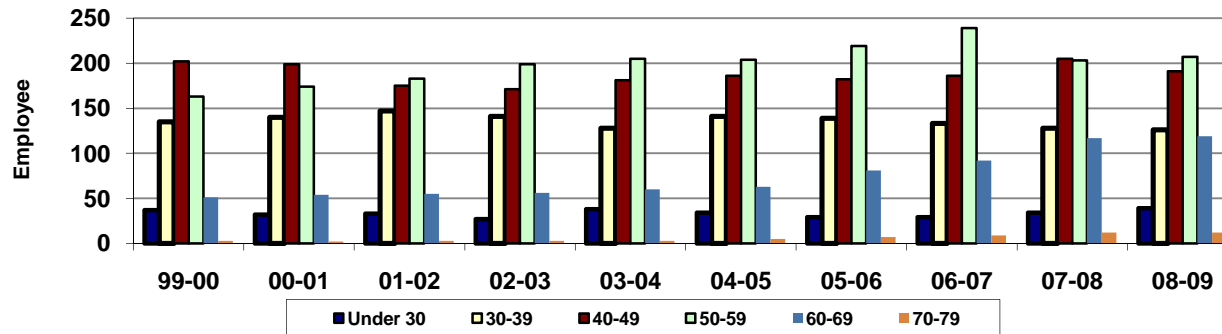
<u>Winter</u>	<u>99-00</u>	<u>00-01</u>	<u>01-02</u>	<u>02-03</u>	<u>03-04</u>	<u>04-05</u>	<u>05-06</u>	<u>06-07</u>	<u>07-08</u>	<u>08-09</u>
<b>Under 30</b>	37	32	33	27	40	34	32	27	29	31
<b>30-39</b>	139	144	147	139	123	136	141	130	125	122
<b>40-49</b>	197	197	179	168	181	189	191	186	206	181
<b>50-59</b>	164	173	182	204	205	201	223	234	209	198
<b>60-69</b>	53	53	63	60	66	63	84	91	117	111
<b>70-79</b>	1	3	2	3	4	6	8	11	10	11
<b>80 &amp; Over</b>	1								1	1
<b>Total</b>	<b>592</b>	<b>602</b>	<b>606</b>	<b>601</b>	<b>619</b>	<b>629</b>	<b>679</b>	<b>679</b>	<b>697</b>	<b>655</b>
(Not Reporting)	42	38	60	41	29	34	6	12	9	15

<b>% Under 30</b>	6.3%	5.3%	5.4%	4.5%	6.5%	5.4%	4.7%	4.0%	4.2%	4.7%
<b>% 30-39</b>	23.5%	23.9%	24.3%	23.1%	19.9%	21.6%	20.8%	19.1%	17.9%	18.6%
<b>% 40-49</b>	33.3%	32.7%	29.5%	28.0%	29.2%	30.0%	28.1%	27.4%	29.6%	27.6%
<b>% 50-59</b>	27.7%	28.7%	30.0%	33.9%	33.1%	32.0%	32.8%	34.5%	30.0%	30.2%
<b>% 60-69</b>	9.0%	8.8%	10.4%	10.0%	10.7%	10.0%	12.4%	13.4%	16.8%	16.9%
<b>% 70-79</b>	0.2%	0.5%	0.3%	0.5%	0.6%	1.0%	1.2%	1.6%	1.4%	1.7%
<b>% 80 &amp; Over</b>	0.2%								0.1%	0.2%

Source: SBCTC PMIS (EMPYRQ, LU\_AGE\_GROUP);  
EMP\_STAT\_PMIS <> 7 or <>8; GbyAGE\_GROUP (Avg)

Last updated on September 11, 2009  
GRCC • Research and Planning Office • Loan Spen

## Green River Community College Spring Quarter - Employee Age (College Total)



<u>Spring</u>	<u>99-00</u>	<u>00-01</u>	<u>01-02</u>	<u>02-03</u>	<u>03-04</u>	<u>04-05</u>	<u>05-06</u>	<u>06-07</u>	<u>07-08</u>	<u>08-09</u>
<b>Under 30</b>	37	32	33	27	38	34	29	29	34	39
<b>30-39</b>	135	140	147	141	128	141	139	133	128	126
<b>40-49</b>	202	199	175	171	181	186	182	186	205	191
<b>50-59</b>	163	174	183	199	205	204	219	239	203	207
<b>60-69</b>	51	54	55	56	60	63	81	92	117	119
<b>70-79</b>	3	2	3	3	3	5	7	9	12	12
<b>80 &amp; Over</b>	1								1	1
<b>Total</b>	<b>592</b>	<b>601</b>	<b>596</b>	<b>597</b>	<b>615</b>	<b>633</b>	<b>657</b>	<b>688</b>	<b>700</b>	<b>695</b>
(Not Reporting)	41	45	60	44	42	32	6	9	11	17

<b>% Under 30</b>	6.3%	5.3%	5.5%	4.5%	6.2%	5.4%	4.4%	4.2%	4.9%	5.6%
<b>% 30-39</b>	22.8%	23.3%	24.7%	23.6%	20.8%	22.3%	21.2%	19.3%	18.3%	18.1%
<b>% 40-49</b>	34.1%	33.1%	29.4%	28.6%	29.4%	29.4%	27.7%	27.0%	29.3%	27.5%
<b>% 50-59</b>	27.5%	29.0%	30.7%	33.3%	33.3%	32.2%	33.3%	34.7%	29.0%	29.8%
<b>% 60-69</b>	8.6%	9.0%	9.2%	9.4%	9.8%	10.0%	12.3%	13.4%	16.7%	17.1%
<b>% 70-79</b>	0.5%	0.3%	0.5%	0.5%	0.5%	0.8%	1.1%	1.3%	1.7%	1.7%
<b>% 80 &amp; Over</b>	0.2%								0.1%	0.1%

Source: SBCTC PMIS (EMPYRQ, LU\_AGE\_GROUP);  
EMP\_STAT\_PMIS <> 7 or <>8; GbyAGE\_GROUP (Avg)

Last updated on September 11, 2009  
GRCC • Research and Planning Office • Loan Spen