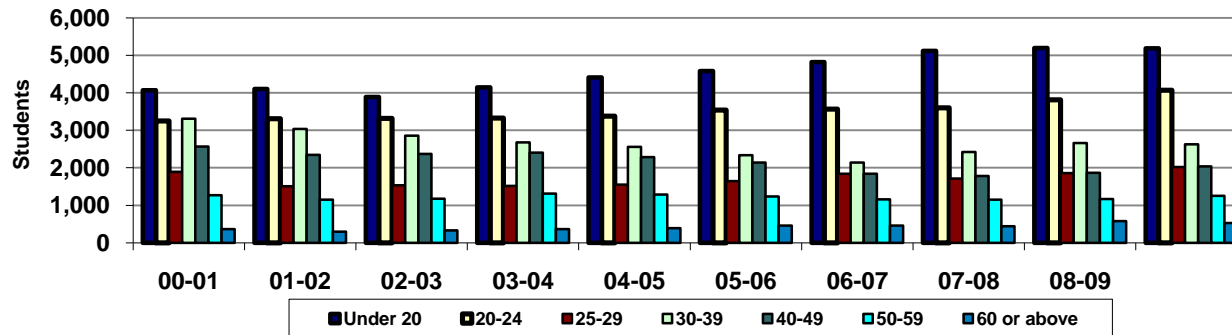


## Green River Community College Age Groups - Annual Headcount (unduplicated) - (College Total)



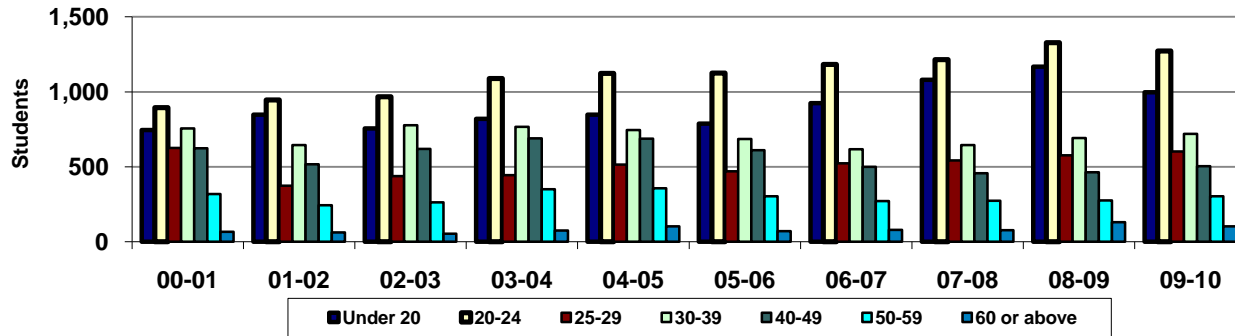
<u>Year</u>	<u>00-01</u>	<u>01-02</u>	<u>02-03</u>	<u>03-04</u>	<u>04-05</u>	<u>05-06</u>	<u>06-07</u>	<u>07-08</u>	<u>08-09</u>	<u>09-10</u>
<b>Under 20</b>	4,070	4,099	3,893	4,141	4,412	4,583	4,818	5,117	5,191	5,189
<b>20-24</b>	3,251	3,311	3,315	3,330	3,381	3,539	3,563	3,598	3,810	4,071
<b>25-29</b>	1,892	1,508	1,531	1,520	1,550	1,644	1,838	1,717	1,859	2,018
<b>30-39</b>	3,308	3,037	2,860	2,680	2,562	2,339	2,143	2,421	2,663	2,624
<b>40-49</b>	2,571	2,344	2,368	2,401	2,288	2,139	1,842	1,779	1,867	2,037
<b>50-59</b>	1,270	1,147	1,176	1,310	1,285	1,235	1,157	1,147	1,171	1,252
<b>60 or above</b>	367	301	332	363	395	457	462	441	581	528
<b>Total</b>	<b>16,729</b>	<b>15,747</b>	<b>15,475</b>	<b>15,745</b>	<b>15,873</b>	<b>15,936</b>	<b>15,823</b>	<b>16,220</b>	<b>17,142</b>	<b>17,719</b>
(Not Reporting)	110	482	486	378	335	414	188	194	133	43

<b>% under 20</b>	24.3%	26.0%	25.2%	26.3%	27.8%	28.8%	30.4%	31.5%	30.3%	29.3%
<b>% 20-24</b>	19.4%	21.0%	21.4%	21.1%	21.3%	22.2%	22.5%	22.2%	22.2%	23.0%
<b>% 25-29</b>	11.3%	9.6%	9.9%	9.7%	9.8%	10.3%	11.6%	10.6%	10.8%	11.4%
<b>% 30-39</b>	19.8%	19.3%	18.5%	17.0%	16.1%	14.7%	13.5%	14.9%	15.5%	14.8%
<b>% 40-49</b>	15.4%	14.9%	15.3%	15.2%	14.4%	13.4%	11.6%	11.0%	10.9%	11.5%
<b>% 50-59</b>	7.6%	7.3%	7.6%	8.3%	8.1%	7.7%	7.3%	7.1%	6.8%	7.1%
<b>% 60 or above</b>	2.2%	1.9%	2.1%	2.3%	2.5%	2.9%	2.9%	2.7%	3.4%	3.0%

Excludes SBCTC non-reported students and students not reporting age  
Source: SBCTC Data Warehouse (Student), MIS\_STAT<0

Last updated on September 17, 2010  
GRCC • Research and Planning Office • Loan Spencer

### Green River Community College Summer Quarter - Age Groups (College Total)



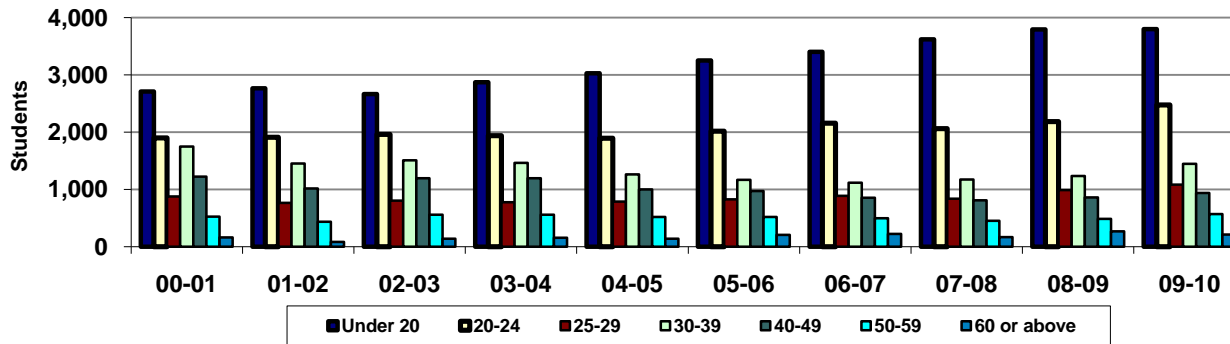
<u>Year</u>	<u>00-01</u>	<u>01-02</u>	<u>02-03</u>	<u>03-04</u>	<u>04-05</u>	<u>05-06</u>	<u>06-07</u>	<u>07-08</u>	<u>08-09</u>	<u>09-10</u>
<b>Under 20</b>	745	848	757	820	848	787	925	1,081	1,168	997
<b>20-24</b>	894	947	968	1,090	1,124	1,125	1,182	1,215	1,327	1,272
<b>25-29</b>	625	373	438	445	514	471	523	543	577	603
<b>30-39</b>	757	645	777	767	746	685	618	646	692	720
<b>40-49</b>	624	517	619	689	687	610	500	458	464	504
<b>50-59</b>	318	243	262	350	357	303	272	274	276	303
<b>60 or above</b>	67	63	54	75	103	71	80	77	130	102
<b>Total</b>	<b>4,030</b>	<b>3,636</b>	<b>3,875</b>	<b>4,236</b>	<b>4,379</b>	<b>4,052</b>	<b>4,100</b>	<b>4,294</b>	<b>4,634</b>	<b>4,501</b>
(Not Reporting)	9	54	94	103	86	192	44	58	49	14

<b>% under 20</b>	18.5%	23.3%	19.5%	19.4%	19.4%	19.4%	22.6%	25.2%	25.2%	22.2%
<b>% 20-24</b>	22.2%	26.0%	25.0%	25.7%	25.7%	27.8%	28.8%	28.3%	28.6%	28.3%
<b>% 25-29</b>	15.5%	10.3%	11.3%	10.5%	11.7%	11.6%	12.8%	12.6%	12.5%	13.4%
<b>% 30-39</b>	18.8%	17.7%	20.1%	18.1%	17.0%	16.9%	15.1%	15.0%	14.9%	16.0%
<b>% 40-49</b>	15.5%	14.2%	16.0%	16.3%	15.7%	15.1%	12.2%	10.7%	10.0%	11.2%
<b>% 50-59</b>	7.9%	6.7%	6.8%	8.3%	8.2%	7.5%	6.6%	6.4%	6.0%	6.7%
<b>% 60 or above</b>	1.7%	1.7%	1.4%	1.8%	2.4%	1.8%	2.0%	1.8%	2.8%	2.3%

Excludes SBCTC non-reported students and students not reporting age  
Source: SBCTC Data Warehouse (Student), MIS\_STAT<0

Last updated on September 17, 2010  
GRCC • Research and Planning Office • Loan Spencer

## Green River Community College Fall Quarter - Age Groups (College Total)



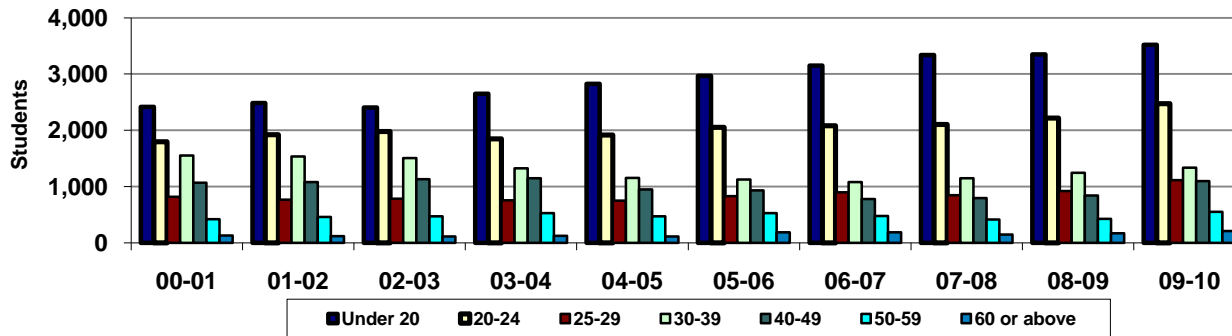
<u>Year</u>	<u>00-01</u>	<u>01-02</u>	<u>02-03</u>	<u>03-04</u>	<u>04-05</u>	<u>05-06</u>	<u>06-07</u>	<u>07-08</u>	<u>08-09</u>	<u>09-10</u>
<b>Under 20</b>	2,710	2,769	2,665	2,873	3,030	3,253	3,404	3,623	3,796	3,804
<b>20-24</b>	1,899	1,910	1,959	1,942	1,896	2,016	2,158	2,063	2,186	2,474
<b>25-29</b>	875	763	802	778	786	825	890	838	991	1,083
<b>30-39</b>	1,751	1,454	1,509	1,466	1,265	1,168	1,115	1,174	1,233	1,445
<b>40-49</b>	1,226	1,019	1,195	1,198	998	972	853	808	861	940
<b>50-59</b>	527	436	559	561	517	520	498	452	486	571
<b>60 or above</b>	163	84	138	153	137	204	222	168	266	211
<b>Total</b>	<b>9,151</b>	<b>8,435</b>	<b>8,827</b>	<b>8,971</b>	<b>8,629</b>	<b>8,958</b>	<b>9,140</b>	<b>9,126</b>	<b>9,819</b>	<b>10,528</b>
(Not Reporting)	2	133	197	105	110	89	72	73	48	15

<b>% under 20</b>	29.6%	32.8%	30.2%	32.0%	35.1%	36.3%	37.2%	39.7%	38.7%	36.1%
<b>% 20-24</b>	20.8%	22.6%	22.2%	21.6%	22.0%	22.5%	23.6%	22.6%	22.3%	23.5%
<b>% 25-29</b>	9.6%	9.0%	9.1%	8.7%	9.1%	9.2%	9.7%	9.2%	10.1%	10.3%
<b>% 30-39</b>	19.1%	17.2%	17.1%	16.3%	14.7%	13.0%	12.2%	12.9%	12.6%	13.7%
<b>% 40-49</b>	13.4%	12.1%	13.5%	13.4%	11.6%	10.9%	9.3%	8.9%	8.8%	8.9%
<b>% 50-59</b>	5.8%	5.2%	6.3%	6.3%	6.0%	5.8%	5.4%	5.0%	4.9%	5.4%
<b>% 60 or above</b>	1.8%	1.0%	1.6%	1.7%	1.6%	2.3%	2.4%	1.8%	2.7%	2.0%

Excludes SBCTC non-reported students and students not reporting age  
Source: SBCTC Data Warehouse (Student), MIS\_STAT<0

Last updated on September 17, 2010  
GRCC • Research and Planning Office • Loan Spencer

### Green River Community College Winter Quarter - Age Groups (College Total)



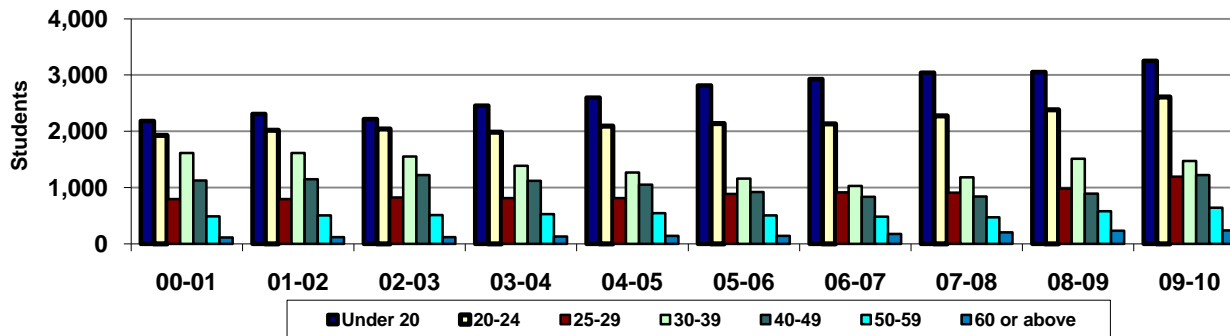
<u>Year</u>	<u>00-01</u>	<u>01-02</u>	<u>02-03</u>	<u>03-04</u>	<u>04-05</u>	<u>05-06</u>	<u>06-07</u>	<u>07-08</u>	<u>08-09</u>	<u>09-10</u>
<b>Under 20</b>	2,416	2,484	2,407	2,647	2,823	2,967	3,148	3,338	3,347	3,518
<b>20-24</b>	1,798	1,923	1,977	1,850	1,914	2,050	2,082	2,102	2,215	2,472
<b>25-29</b>	820	767	785	756	748	829	897	845	921	1,116
<b>30-39</b>	1,554	1,533	1,507	1,322	1,154	1,124	1,079	1,147	1,245	1,335
<b>40-49</b>	1,066	1,082	1,129	1,147	949	935	779	795	842	1,096
<b>50-59</b>	422	459	474	527	471	527	475	413	428	552
<b>60 or above</b>	130	121	116	123	111	188	190	149	173	209
<b>Total</b>	<b>8,206</b>	<b>8,369</b>	<b>8,395</b>	<b>8,372</b>	<b>8,170</b>	<b>8,620</b>	<b>8,650</b>	<b>8,789</b>	<b>9,171</b>	<b>10,298</b>
(Not Reporting)	22	186	151	127	68	80	34	44	47	17

<b>% under 20</b>	29.4%	29.7%	28.7%	31.6%	34.6%	34.4%	36.4%	38.0%	36.5%	34.2%
<b>% 20-24</b>	21.9%	23.0%	23.5%	22.1%	23.4%	23.8%	24.1%	23.9%	24.2%	24.0%
<b>% 25-29</b>	10.0%	9.2%	9.4%	9.0%	9.2%	9.6%	10.4%	9.6%	10.0%	10.8%
<b>% 30-39</b>	18.9%	18.3%	18.0%	15.8%	14.1%	13.0%	12.5%	13.1%	13.6%	13.0%
<b>% 40-49</b>	13.0%	12.9%	13.4%	13.7%	11.6%	10.8%	9.0%	9.0%	9.2%	10.6%
<b>% 50-59</b>	5.1%	5.5%	5.6%	6.3%	5.8%	6.1%	5.5%	4.7%	4.7%	5.4%
<b>% 60 or above</b>	1.6%	1.4%	1.4%	1.5%	1.4%	2.2%	2.2%	1.7%	1.9%	2.0%

Excludes SBCTC non-reported students and students not reporting age  
Source: SBCTC Data Warehouse (Student), MIS\_STAT<0

Last updated on September 17, 2010  
GRCC • Research and Planning Office • Loan Spencer

### Green River Community College Spring Quarter - Age Groups (College Total)



<u>Year</u>	<u>00-01</u>	<u>01-02</u>	<u>02-03</u>	<u>03-04</u>	<u>04-05</u>	<u>05-06</u>	<u>06-07</u>	<u>07-08</u>	<u>08-09</u>	<u>09-10</u>
<b>Under 20</b>	2,185	2,311	2,216	2,454	2,601	2,816	2,926	3,043	3,054	3,254
<b>20-24</b>	1,926	2,019	2,040	1,982	2,093	2,140	2,131	2,272	2,384	2,612
<b>25-29</b>	796	797	827	814	810	886	915	908	982	1,192
<b>30-39</b>	1,616	1,612	1,551	1,388	1,268	1,161	1,027	1,181	1,511	1,471
<b>40-49</b>	1,128	1,149	1,224	1,119	1,054	919	837	842	894	1,223
<b>50-59</b>	491	507	512	528	544	507	482	471	580	640
<b>60 or above</b>	114	118	120	132	143	142	175	202	233	238
<b>Total</b>	<b>8,256</b>	<b>8,513</b>	<b>8,490</b>	<b>8,417</b>	<b>8,513</b>	<b>8,571</b>	<b>8,493</b>	<b>8,919</b>	<b>9,638</b>	<b>10,630</b>
(Not Reporting)	78	178	125	80	101	79	65	37	21	9

<b>% under 20</b>	26.5%	27.1%	26.1%	29.2%	30.6%	32.9%	34.5%	34.1%	31.7%	30.6%
<b>% 20-24</b>	23.3%	23.7%	24.0%	23.5%	24.6%	25.0%	25.1%	25.5%	24.7%	24.6%
<b>% 25-29</b>	9.6%	9.4%	9.7%	9.7%	9.5%	10.3%	10.8%	10.2%	10.2%	11.2%
<b>% 30-39</b>	19.6%	18.9%	18.3%	16.5%	14.9%	13.5%	12.1%	13.2%	15.7%	13.8%
<b>% 40-49</b>	13.7%	13.5%	14.4%	13.3%	12.4%	10.7%	9.9%	9.4%	9.3%	11.5%
<b>% 50-59</b>	5.9%	6.0%	6.0%	6.3%	6.4%	5.9%	5.7%	5.3%	6.0%	6.0%
<b>% 60 or above</b>	1.4%	1.4%	1.4%	1.6%	1.7%	1.7%	2.1%	2.3%	2.4%	2.2%

Excludes SBCTC non-reported students and students not reporting age  
Source: SBCTC Data Warehouse (Student), MIS\_STAT<0

Last updated on September 17, 2010  
GRCC • Research and Planning Office • Loan Spencer