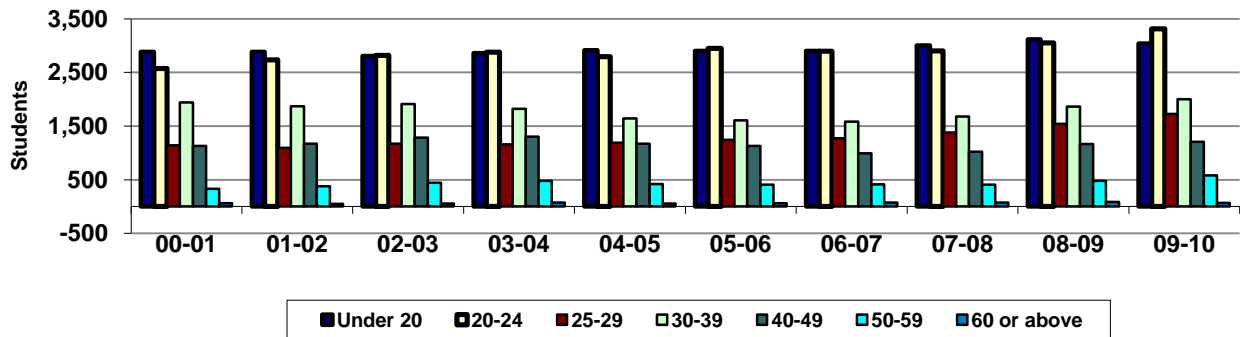


Green River Community College Age Groups - Annual Headcount (unduplicated) State-Supported

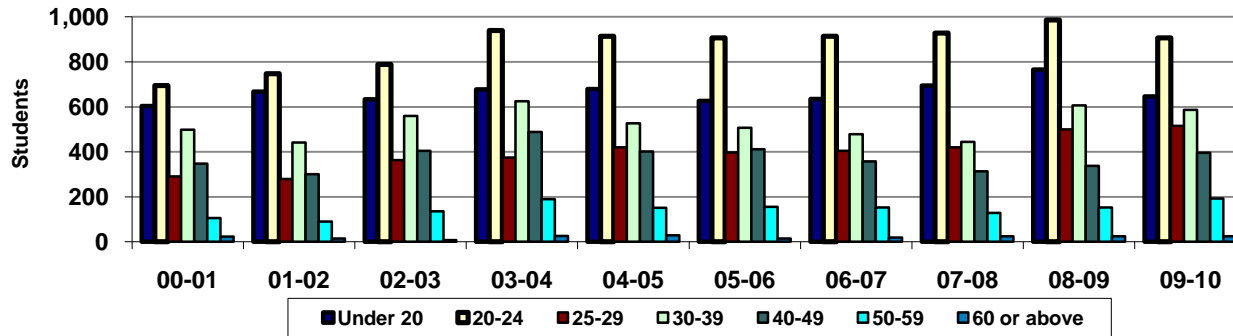


<u>Year</u>	<u>00-01</u>	<u>01-02</u>	<u>02-03</u>	<u>03-04</u>	<u>04-05</u>	<u>05-06</u>	<u>06-07</u>	<u>07-08</u>	<u>08-09</u>	<u>09-10</u>
Under 20	2,883	2,885	2,804	2,859	2,915	2,903	2,902	3,001	3,115	3,039
20-24	2,572	2,732	2,820	2,878	2,795	2,947	2,893	2,903	3,049	3,315
25-29	1,144	1,095	1,173	1,161	1,190	1,245	1,272	1,382	1,542	1,725
30-39	1,941	1,871	1,912	1,819	1,642	1,605	1,583	1,679	1,865	2,002
40-49	1,127	1,172	1,285	1,300	1,173	1,127	995	1,024	1,163	1,209
50-59	333	379	445	481	423	406	414	408	481	579
60 or above	63	53	56	75	57	65	74	76	86	68
Total	10,063	10,187	10,495	10,573	10,195	10,298	10,133	10,473	11,301	11,937
(Not Reporting)	16	57	39	10	6	4	8	11	11	10
% under 20	28.6%	28.3%	26.7%	27.0%	28.6%	28.2%	28.6%	28.7%	27.6%	25.5%
% 20-24	25.6%	26.8%	26.9%	27.2%	27.4%	28.6%	28.6%	27.7%	27.0%	27.8%
% 25-29	11.4%	10.7%	11.2%	11.0%	11.7%	12.1%	12.6%	13.2%	13.6%	14.5%
% 30-39	19.3%	18.4%	18.2%	17.2%	16.1%	15.6%	15.6%	16.0%	16.5%	16.8%
% 40-49	11.2%	11.5%	12.2%	12.3%	11.5%	10.9%	9.8%	9.8%	10.3%	10.1%
% 50-59	3.3%	3.7%	4.2%	4.5%	4.1%	3.9%	4.1%	3.9%	4.3%	4.9%
% 60 or above	0.6%	0.5%	0.5%	0.7%	0.6%	0.6%	0.7%	0.7%	0.8%	0.6%

Excludes SBCTC non-reported and students not reporting age
Source: SBCTC Data Warehouse (Student), MIS_STAT<0; FSPriCat=1

Last updated on September 17, 2010
GRCC • Research and Planning Office • Loan Spencer

Green River Community College Summer Quarter - Age Groups (State-Supported)



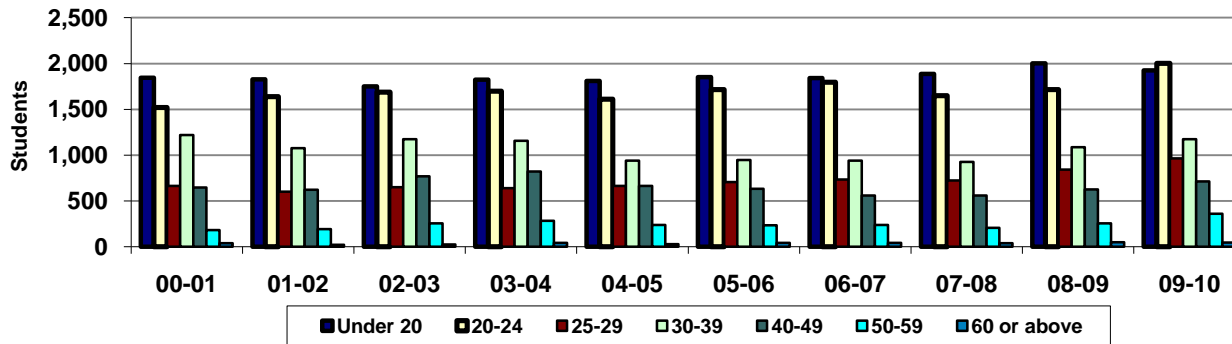
<u>Year</u>	<u>00-01</u>	<u>01-02</u>	<u>02-03</u>	<u>03-04</u>	<u>04-05</u>	<u>05-06</u>	<u>06-07</u>	<u>07-08</u>	<u>08-09</u>	<u>09-10</u>
Under 20	603	667	634	677	679	627	635	694	766	647
20-24	695	747	789	939	914	907	914	928	987	907
25-29	291	279	363	374	420	398	404	420	500	515
30-39	498	442	560	625	527	507	478	444	606	586
40-49	347	300	404	488	402	411	358	314	337	396
50-59	105	90	135	190	151	156	152	129	153	192
60 or above	23	15	8	26	29	15	19	24	25	25
Total	2,562	2,540	2,893	3,319	3,122	3,021	2,960	2,953	3,374	3,268
(Not Reporting)		8	9	7	3	1	1	2	3	4

% under 20	23.5%	26.3%	21.9%	20.4%	21.7%	20.8%	21.5%	23.5%	22.7%	19.8%
% 20-24	27.1%	29.4%	27.3%	28.3%	29.3%	30.0%	30.9%	31.4%	29.3%	27.8%
% 25-29	11.4%	11.0%	12.5%	11.3%	13.5%	13.2%	13.6%	14.2%	14.8%	15.8%
% 30-39	19.4%	17.4%	19.4%	18.8%	16.9%	16.8%	16.1%	15.0%	18.0%	17.9%
% 40-49	13.5%	11.8%	14.0%	14.7%	12.9%	13.6%	12.1%	10.6%	10.0%	12.1%
% 50-59	4.1%	3.5%	4.7%	5.7%	4.8%	5.2%	5.1%	4.4%	4.5%	5.9%
% 60 or above	0.9%	0.6%	0.3%	0.8%	0.9%	0.5%	0.6%	0.8%	0.7%	0.8%

Excludes SBCTC non-reported and students not reporting age
Source: SBCTC Data Warehouse (Student), MIS_STAT<0; FSPriCat=1

Last updated on September 17, 2010
GRCC • Research and Planning Office • Loan Spencer

Green River Community College Fall Quarter - Age Groups (State-Supported)



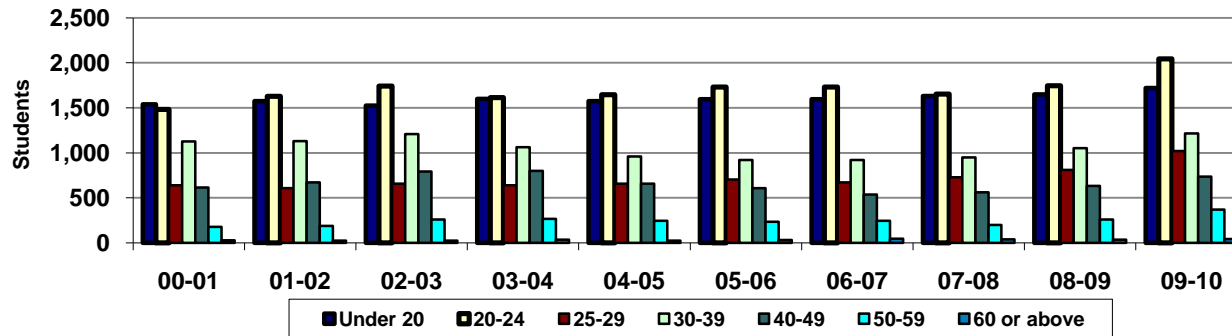
<u>Year</u>	<u>00-01</u>	<u>01-02</u>	<u>02-03</u>	<u>03-04</u>	<u>04-05</u>	<u>05-06</u>	<u>06-07</u>	<u>07-08</u>	<u>08-09</u>	<u>09-10</u>
Under 20	1,845	1,826	1,750	1,824	1,809	1,852	1,841	1,888	2,002	1,925
20-24	1,518	1,637	1,689	1,698	1,612	1,714	1,796	1,648	1,716	2,003
25-29	664	602	650	640	663	707	735	724	840	964
30-39	1,218	1,076	1,173	1,157	939	946	938	925	1,088	1,172
40-49	646	620	767	821	664	633	558	557	626	712
50-59	181	190	256	284	237	235	237	207	253	358
60 or above	37	20	24	42	27	40	41	39	48	44
Total	6,109	5,971	6,309	6,466	5,951	6,127	6,146	5,988	6,573	7,178
(Not Reporting)	1	39	37	7	4	2	6	2	4	5

% under 20	30.2%	30.6%	27.7%	28.2%	30.4%	30.2%	30.0%	31.5%	30.5%	26.8%
% 20-24	24.8%	27.4%	26.8%	26.3%	27.1%	28.0%	29.2%	27.5%	26.1%	27.9%
% 25-29	10.9%	10.1%	10.3%	9.9%	11.1%	11.5%	12.0%	12.1%	12.8%	13.4%
% 30-39	19.9%	18.0%	18.6%	17.9%	15.8%	15.4%	15.3%	15.4%	16.6%	16.3%
% 40-49	10.6%	10.4%	12.2%	12.7%	11.2%	10.3%	9.1%	9.3%	9.5%	9.9%
% 50-59	3.0%	3.2%	4.1%	4.4%	4.0%	3.8%	3.9%	3.5%	3.8%	5.0%
% 60 or above	0.6%	0.3%	0.4%	0.6%	0.5%	0.7%	0.7%	0.7%	0.7%	0.6%

Excludes SBCTC non-reported and students not reporting age
Source: SBCTC Data Warehouse (Student), MIS_STAT<0; FSPriCat=1

Last updated on September 17, 2010
GRCC • Research and Planning Office • Loan Spencer

Green River Community College Winter Quarter - Age Groups (State-Supported)



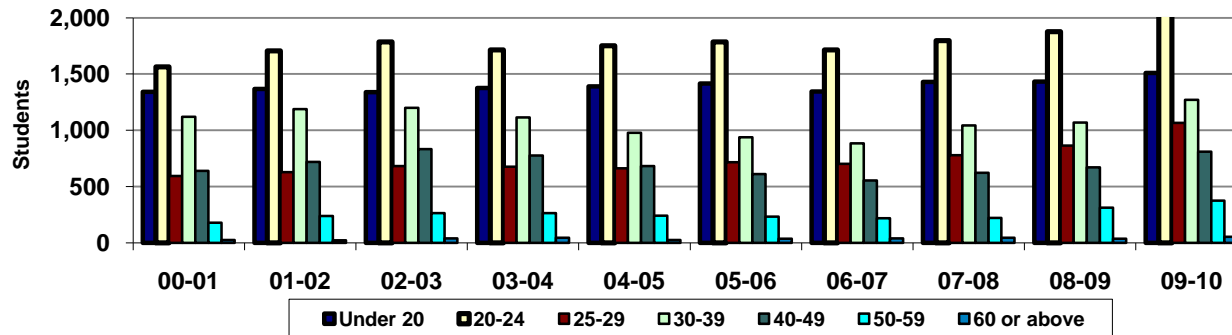
<u>Year</u>	<u>00-01</u>	<u>01-02</u>	<u>02-03</u>	<u>03-04</u>	<u>04-05</u>	<u>05-06</u>	<u>06-07</u>	<u>07-08</u>	<u>08-09</u>	<u>09-10</u>
Under 20	1,540	1,575	1,526	1,598	1,573	1,595	1,595	1,631	1,650	1,719
20-24	1,481	1,627	1,742	1,612	1,644	1,731	1,730	1,653	1,746	2,043
25-29	638	606	656	640	658	702	672	728	811	1,019
30-39	1,127	1,130	1,209	1,063	958	922	921	947	1,052	1,214
40-49	614	672	791	800	657	609	538	561	632	737
50-59	177	189	258	267	244	235	245	200	258	370
60 or above	28	23	24	35	24	32	46	39	37	44
Total	5,605	5,822	6,206	6,015	5,758	5,826	5,747	5,759	6,186	7,146
(Not Reporting)	1	30	18	6	3	3	3	4	3	1

% under 20	27.5%	27.1%	24.6%	26.6%	27.3%	27.4%	27.8%	28.3%	26.7%	24.1%
% 20-24	26.4%	27.9%	28.1%	26.8%	28.6%	29.7%	30.1%	28.7%	28.2%	28.6%
% 25-29	11.4%	10.4%	10.6%	10.6%	11.4%	12.0%	11.7%	12.6%	13.1%	14.3%
% 30-39	20.1%	19.4%	19.5%	17.7%	16.6%	15.8%	16.0%	16.4%	17.0%	17.0%
% 40-49	11.0%	11.5%	12.7%	13.3%	11.4%	10.5%	9.4%	9.7%	10.2%	10.3%
% 50-59	3.2%	3.2%	4.2%	4.4%	4.2%	4.0%	4.3%	3.5%	4.2%	5.2%
% 60 or above	0.5%	0.4%	0.4%	0.6%	0.4%	0.5%	0.8%	0.7%	0.6%	0.6%

Excludes SBCTC non-reported and students not reporting age
Source: SBCTC Data Warehouse (Student), MIS_STAT<0; FSPriCat=1

Last updated on September 17, 2010
GRCC • Research and Planning Office • Loan Spencer

Green River Community College Spring Quarter - Age Groups (State-Supported)



<u>Year</u>	<u>00-01</u>	<u>01-02</u>	<u>02-03</u>	<u>03-04</u>	<u>04-05</u>	<u>05-06</u>	<u>06-07</u>	<u>07-08</u>	<u>08-09</u>	<u>09-10</u>
Under 20	1,341	1,367	1,339	1,376	1,390	1,417	1,346	1,429	1,433	1,510
20-24	1,564	1,705	1,785	1,713	1,751	1,786	1,714	1,796	1,877	2,093
25-29	593	629	683	676	663	715	703	778	863	1,067
30-39	1,119	1,189	1,200	1,114	979	937	884	1,044	1,070	1,271
40-49	640	720	833	777	682	611	555	623	670	809
50-59	178	239	263	264	241	232	218	222	313	375
60 or above	24	22	39	46	26	37	41	44	37	55
Total	5,459	5,871	6,142	5,966	5,732	5,735	5,461	5,936	6,263	7,180
(Not Reporting)	14	31	12	4	4	2	5	7	5	4

% under 20	24.6%	23.3%	21.8%	23.1%	24.2%	24.7%	24.6%	24.1%	22.9%	21.0%
% 20-24	28.6%	29.0%	29.1%	28.7%	30.5%	31.1%	31.4%	30.3%	30.0%	29.2%
% 25-29	10.9%	10.7%	11.1%	11.3%	11.6%	12.5%	12.9%	13.1%	13.8%	14.9%
% 30-39	20.5%	20.3%	19.5%	18.7%	17.1%	16.3%	16.2%	17.6%	17.1%	17.7%
% 40-49	11.7%	12.3%	13.6%	13.0%	11.9%	10.7%	10.2%	10.5%	10.7%	11.3%
% 50-59	3.3%	4.1%	4.3%	4.4%	4.2%	4.0%	4.0%	3.7%	5.0%	5.2%
% 60 or above	0.4%	0.4%	0.6%	0.8%	0.5%	0.6%	0.8%	0.7%	0.6%	0.8%

Excludes SBCTC non-reported and students not reporting age
Source: SBCTC Data Warehouse (Student), MIS_STAT<0; FSPriCat=1

Last updated on September 17, 2010
GRCC • Research and Planning Office • Loan Spencer