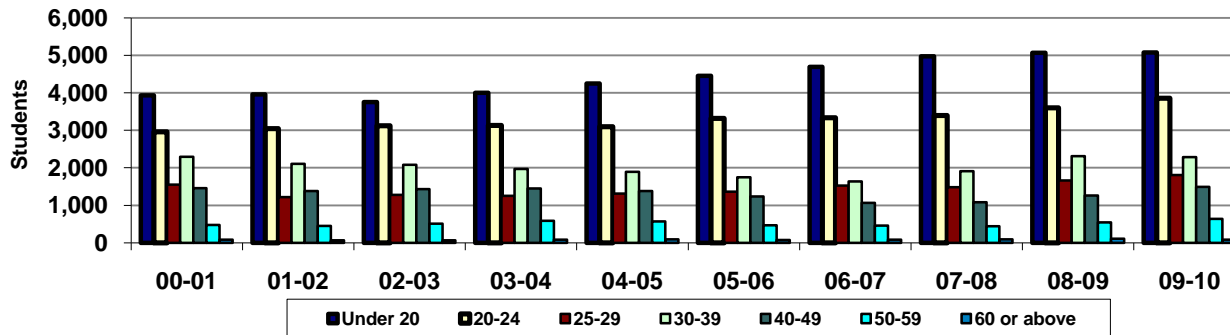


Green River Community College Age Groups - Annual Headcount (unduplicated) - State and Contract-Funded



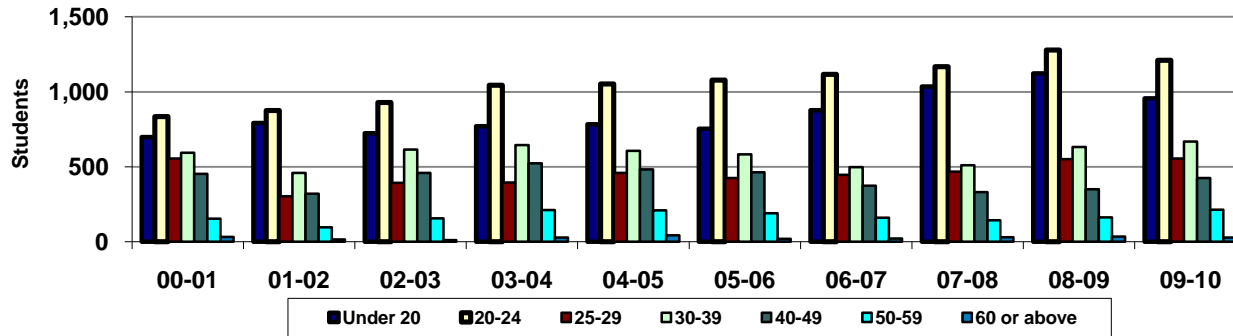
<u>Year</u>	<u>00-01</u>	<u>01-02</u>	<u>02-03</u>	<u>03-04</u>	<u>04-05</u>	<u>05-06</u>	<u>06-07</u>	<u>07-08</u>	<u>08-09</u>	<u>09-10</u>
Under 20	3,931	3,961	3,753	3,996	4,245	4,455	4,692	4,975	5,063	5,078
20-24	2,962	3,043	3,119	3,127	3,098	3,317	3,333	3,397	3,602	3,858
25-29	1,548	1,219	1,282	1,252	1,314	1,364	1,525	1,487	1,661	1,811
30-39	2,297	2,106	2,084	1,969	1,896	1,744	1,639	1,913	2,307	2,284
40-49	1,454	1,384	1,436	1,452	1,380	1,236	1,067	1,086	1,260	1,495
50-59	474	450	513	584	570	472	461	445	544	636
60 or above	85	70	68	86	92	79	86	92	114	87
Total	12,751	12,233	12,255	12,466	12,595	12,667	12,803	13,395	14,551	15,249
(Not Reporting)	35	74	58	43	26	170	21	34	23	13

% under 20	30.8%	32.4%	30.6%	32.1%	33.7%	35.2%	36.6%	37.1%	34.8%	33.3%
% 20-24	23.2%	24.9%	25.5%	25.1%	24.6%	26.2%	26.0%	25.4%	24.8%	25.3%
% 25-29	12.1%	10.0%	10.5%	10.0%	10.4%	10.8%	11.9%	11.1%	11.4%	11.9%
% 30-39	18.0%	17.2%	17.0%	15.8%	15.1%	13.8%	12.8%	14.3%	15.9%	15.0%
% 40-49	11.4%	11.3%	11.7%	11.6%	11.0%	9.8%	8.3%	8.1%	8.7%	9.8%
% 50-59	3.7%	3.7%	4.2%	4.7%	4.5%	3.7%	3.6%	3.3%	3.7%	4.2%
% 60 or above	0.7%	0.6%	0.6%	0.7%	0.7%	0.6%	0.7%	0.7%	0.8%	0.6%

Excludes SBCTC non-reported students and students not reporting age
Source: SBCTC Data Warehouse (Student), MIS_STAT<>0; FSPriCat<>3

Last updated on September 17, 2010
GRCC • Research and Planning Office • Loan Spencer

Green River Community College Summer Quarter - Age Groups (State and Contract-Funded)



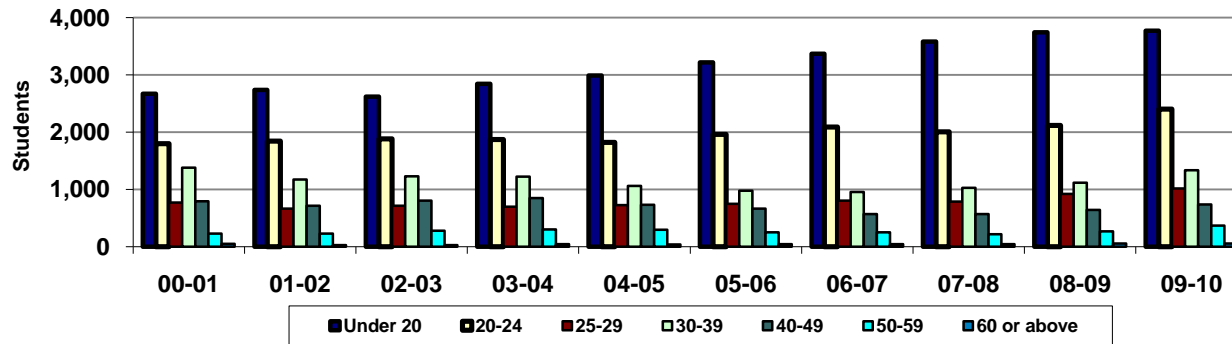
<u>Year</u>	<u>00-01</u>	<u>01-02</u>	<u>02-03</u>	<u>03-04</u>	<u>04-05</u>	<u>05-06</u>	<u>06-07</u>	<u>07-08</u>	<u>08-09</u>	<u>09-10</u>
Under 20	699	793	725	770	784	753	877	1,036	1,124	956
20-24	835	876	930	1,044	1,053	1,078	1,116	1,169	1,280	1,210
25-29	556	303	393	396	460	425	447	467	551	555
30-39	593	459	615	646	607	584	497	510	633	669
40-49	453	320	460	524	483	464	373	332	350	425
50-59	155	96	156	212	209	190	161	144	162	214
60 or above	32	16	11	29	44	20	21	30	34	29
Total	3,323	2,863	3,290	3,621	3,640	3,514	3,492	3,688	4,134	4,058
(Not Reporting)		8	13	11	14	147	2	3	5	5

% under 20	21.0%	27.7%	22.0%	21.3%	21.5%	21.4%	25.1%	28.1%	27.2%	23.6%
% 20-24	25.1%	30.6%	28.3%	28.8%	28.9%	30.7%	32.0%	31.7%	31.0%	29.8%
% 25-29	16.7%	10.6%	11.9%	10.9%	12.6%	12.1%	12.8%	12.7%	13.3%	13.7%
% 30-39	17.8%	16.0%	18.7%	17.8%	16.7%	16.6%	14.2%	13.8%	15.3%	16.5%
% 40-49	13.6%	11.2%	14.0%	14.5%	13.3%	13.2%	10.7%	9.0%	8.5%	10.5%
% 50-59	4.7%	3.4%	4.7%	5.9%	5.7%	5.4%	4.6%	3.9%	3.9%	5.3%
% 60 or above	1.0%	0.6%	0.3%	0.8%	1.2%	0.6%	0.6%	0.8%	0.8%	0.7%

Excludes SBCTC non-reported students and students not reporting age
Source: SBCTC Data Warehouse (Student), MIS_STAT<0>; FSPriCat<3>

Last updated on September 17, 2010
GRCC • Research and Planning Office • Loan Spencer

Green River Community College Fall Quarter - Age Groups (State and Contract-Funded)



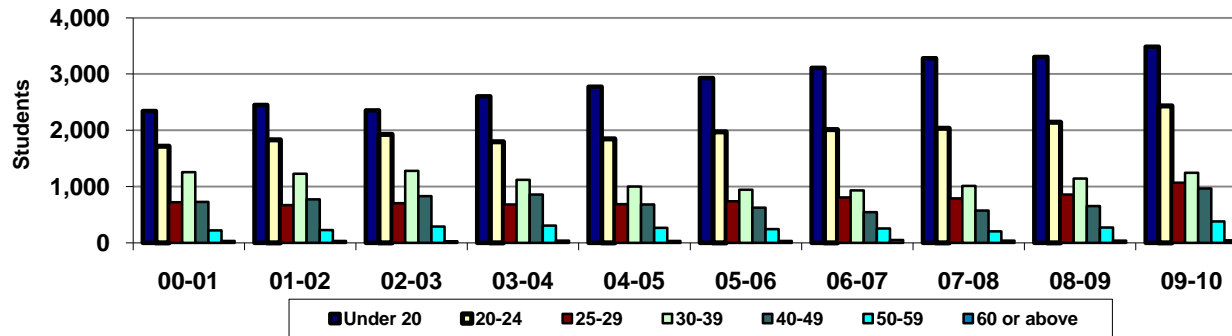
<u>Year</u>	<u>00-01</u>	<u>01-02</u>	<u>02-03</u>	<u>03-04</u>	<u>04-05</u>	<u>05-06</u>	<u>06-07</u>	<u>07-08</u>	<u>08-09</u>	<u>09-10</u>
Under 20	2,674	2,739	2,624	2,843	2,991	3,221	3,372	3,585	3,746	3,771
20-24	1,798	1,843	1,886	1,874	1,822	1,963	2,092	2,006	2,121	2,402
25-29	769	667	713	696	728	751	806	789	923	1,015
30-39	1,382	1,173	1,228	1,223	1,060	979	957	1,026	1,116	1,338
40-49	793	714	807	850	733	662	572	571	644	737
50-59	231	226	277	300	294	253	248	219	266	368
60 or above	47	25	29	42	39	44	45	43	57	53
Total	7,694	7,387	7,564	7,828	7,667	7,873	8,092	8,239	8,873	9,684
(Not Reporting)	2	47	42	11	7	20	10	26	11	8

% under 20	34.8%	37.1%	34.7%	36.3%	39.0%	40.9%	41.7%	43.5%	42.2%	38.9%
% 20-24	23.4%	24.9%	24.9%	23.9%	23.8%	24.9%	25.9%	24.3%	23.9%	24.8%
% 25-29	10.0%	9.0%	9.4%	8.9%	9.5%	9.5%	10.0%	9.6%	10.4%	10.5%
% 30-39	18.0%	15.9%	16.2%	15.6%	13.8%	12.4%	11.8%	12.5%	12.6%	13.8%
% 40-49	10.3%	9.7%	10.7%	10.9%	9.6%	8.4%	7.1%	6.9%	7.3%	7.6%
% 50-59	3.0%	3.1%	3.7%	3.8%	3.8%	3.2%	3.1%	2.7%	3.0%	3.8%
% 60 or above	0.6%	0.3%	0.4%	0.5%	0.5%	0.6%	0.6%	0.5%	0.6%	0.5%

Excludes SBCTC non-reported students and students not reporting age
Source: SBCTC Data Warehouse (Student), MIS_STAT<0; FSPriCat<3

Last updated on September 17, 2010
GRCC • Research and Planning Office • Loan Spencer

Green River Community College Winter Quarter - Age Groups (State and Contract-Funded)



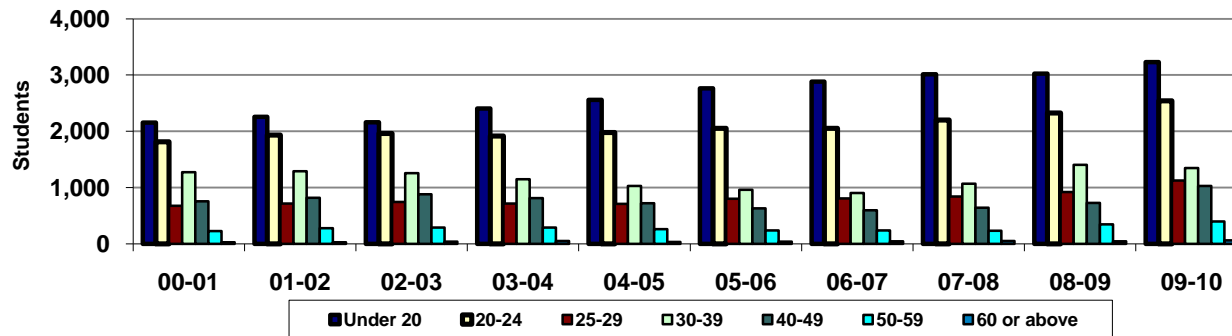
<u>Year</u>	<u>00-01</u>	<u>01-02</u>	<u>02-03</u>	<u>03-04</u>	<u>04-05</u>	<u>05-06</u>	<u>06-07</u>	<u>07-08</u>	<u>08-09</u>	<u>09-10</u>
Under 20	2,344	2,452	2,355	2,602	2,776	2,926	3,112	3,278	3,302	3,485
20-24	1,715	1,828	1,929	1,796	1,849	1,975	2,013	2,034	2,142	2,431
25-29	722	668	705	683	689	740	808	789	856	1,066
30-39	1,259	1,228	1,280	1,119	999	945	932	1,012	1,140	1,243
40-49	725	772	832	859	682	624	547	574	655	964
50-59	222	226	291	309	265	245	253	205	271	378
60 or above	33	33	29	40	31	34	48	40	42	46
Total	7,020	7,207	7,421	7,408	7,291	7,489	7,713	7,932	8,408	9,613
(Not Reporting)	7	35	28	30	5	6	9	7	13	3

% under 20	33.4%	34.0%	31.7%	35.1%	38.1%	39.1%	40.3%	41.3%	39.3%	36.3%
% 20-24	24.4%	25.4%	26.0%	24.2%	25.4%	26.4%	26.1%	25.6%	25.5%	25.3%
% 25-29	10.3%	9.3%	9.5%	9.2%	9.5%	9.9%	10.5%	9.9%	10.2%	11.1%
% 30-39	17.9%	17.0%	17.2%	15.1%	13.7%	12.6%	12.1%	12.8%	13.6%	12.9%
% 40-49	10.3%	10.7%	11.2%	11.6%	9.4%	8.3%	7.1%	7.2%	7.8%	10.0%
% 50-59	3.2%	3.1%	3.9%	4.2%	3.6%	3.3%	3.3%	2.6%	3.2%	3.9%
% 60 or above	0.5%	0.5%	0.4%	0.5%	0.4%	0.5%	0.6%	0.5%	0.5%	0.5%

Excludes SBCTC non-reported students and students not reporting age
Source: SBCTC Data Warehouse (Student), MIS_STAT<>0; FSPriCat<>3

Last updated on September 17, 2010
GRCC • Research and Planning Office • Loan Spencer

Green River Community College Spring Quarter - Age Groups (State and Contract-Funded)



<u>Year</u>	<u>00-01</u>	<u>01-02</u>	<u>02-03</u>	<u>03-04</u>	<u>04-05</u>	<u>05-06</u>	<u>06-07</u>	<u>07-08</u>	<u>08-09</u>	<u>09-10</u>
Under 20	2,152	2,258	2,162	2,404	2,556	2,763	2,883	3,011	3,027	3,228
20-24	1,812	1,932	1,962	1,914	1,979	2,051	2,054	2,203	2,324	2,540
25-29	675	714	746	718	713	799	809	840	920	1,128
30-39	1,271	1,288	1,256	1,151	1,030	963	903	1,068	1,403	1,348
40-49	756	817	879	813	724	632	595	642	726	1,031
50-59	228	280	288	289	262	240	241	231	345	397
60 or above	30	30	42	49	31	40	45	49	46	64
Total	6,924	7,319	7,335	7,338	7,295	7,488	7,530	8,044	8,791	9,736
(Not Reporting)	26	39	18	6	10	4	13	9	11	6

% under 20	31.1%	30.9%	29.5%	32.8%	35.0%	36.9%	38.3%	37.4%	34.4%	33.2%
% 20-24	26.2%	26.4%	26.7%	26.1%	27.1%	27.4%	27.3%	27.4%	26.4%	26.1%
% 25-29	9.7%	9.8%	10.2%	9.8%	9.8%	10.7%	10.7%	10.4%	10.5%	11.6%
% 30-39	18.4%	17.6%	17.1%	15.7%	14.1%	12.9%	12.0%	13.3%	16.0%	13.8%
% 40-49	10.9%	11.2%	12.0%	11.1%	9.9%	8.4%	7.9%	8.0%	8.3%	10.6%
% 50-59	3.3%	3.8%	3.9%	3.9%	3.6%	3.2%	3.2%	2.9%	3.9%	4.1%
% 60 or above	0.4%	0.4%	0.6%	0.7%	0.4%	0.5%	0.6%	0.6%	0.5%	0.7%

Excludes SBCTC non-reported students and students not reporting age
Source: SBCTC Data Warehouse (Student), MIS_STAT<0; FSPriCat<3

Last updated on September 17, 2010
GRCC • Research and Planning Office • Loan Spencer