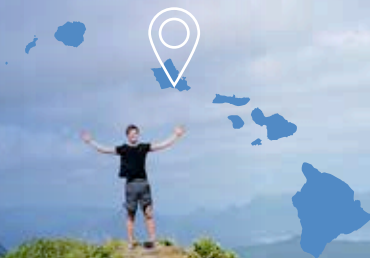


CALIFORNIA



HAWAII



GREEN RIVER COLLEGE STUDY ABROAD



www.greenriver.edu/GapYear

WE ARE LOCATED NEAR SEATTLE!



WASHINGTON

AUSTRALIA & NEW ZEALAND





I DIDN'T KNOW WHAT I WANTED TO STUDY YET, SO I DECIDED TO TAKE A GAP YEAR."

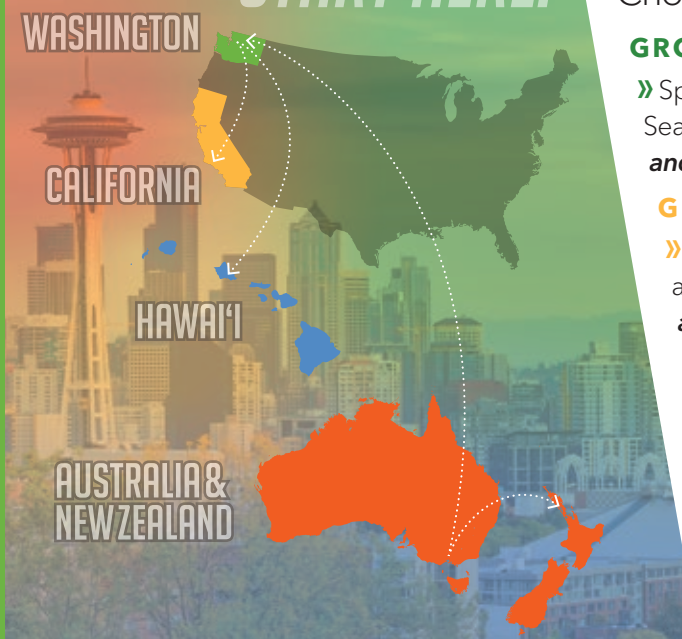
~Lisa Vessies
The Netherlands



GREEN RIVER COLLEGE HELPED ME ACHIEVE MY GOAL OF BEING ACCEPTED INTO COPENHAGEN BUSINESS SCHOOL." ~Jacob Kristensen
Denmark

GREEN RIVER COLLEGE (GRC) OFFERS EXCITING STUDY ABROAD OPPORTUNITIES FOR HIGH SCHOOL GRADUATES

START HERE.



Choose the academic adventure that works for you:

GRC ONLY

» Spend 3, 6 or 9 months at GRC, located 45 minutes south of Seattle and 3 hours south of Vancouver, Canada. **Live on campus and take fun and interesting classes.**

GRC TO CALIFORNIA

» Spend September to December at GRC and January to May at Santa Barbara City College. **Experience majestic mountains and sandy beaches.**

GRC TO HAWAII

» Spend September to December at GRC and January to May at Kapi'olani Community College. **Experience the Pacific Northwest and the beautiful Hawaiian Islands.**

GRC TO AUSTRALIA & NEW ZEALAND

» Spend September to December at GRC and January to March in Australia and New Zealand. Return to GRC April to June (optional). **Skip winter and jump right into summer.**

ESTIMATED COSTS

COSTS	TERM (3 MONTHS)	ACADEMIC YEAR (9 MONTHS)
Tuition*	\$3,851	\$11,553
Living Expenses	\$3,300	\$9,900
Fees*	\$201	\$603
Books	\$248	\$744
TOTAL	\$7,600	\$22,800

* Based on 12-18 credits per term. Note: Expenses for SBCC and Kapi'olani may differ slightly depending on the cost of living and tuition. There are added expenses for Australia & New Zealand including airfare and other program costs.

“MY GAP YEAR WAS A REALLY GREAT EXPERIENCE. I HAD LOADS OF FUN AND MADE FRIENDS WITH PEOPLE FROM ALL OVER THE WORLD.”

~ Suzanne Jonkers, The Netherlands

DATES & DEADLINES



Scan with
your camera

greenriver.edu/GapYear

ADMISSION REQUIREMENTS

- » Completed International Student Application
- » Financial/Bank Statement showing at least \$22,800 for 9 months of study, \$15,200 for six months, \$7,600 for three months.
- » \$50 non-refundable application fee
- » 16 years of age by arrival date (for GRC only) 18+ California and Hawaii
17+ Australia & New Zealand
- » Transcripts for last school attended (recommended)
- » Copy of passport photo page



12402 SE 320TH STREET
AUBURN, WA 98092 USA

CALL +1-253 288-3300

EMAIL international@greenriver.edu

ONLINE greenriver.edu/international



I WAS FAIRLY CERTAIN I WANTED TO BE A PILOT BEFORE MY GAP YEAR. HOWEVER, COMING TO GREEN RIVER JUST CONFIRMED THIS." ~Pascal Weber
Germany