



# GATOR GUIDE

MAKING THE MOST OF YOUR  
**GATOR EXPERIENCE**  
AT GREEN RIVER COLLEGE

## TABLE OF CONTENTS

---

|  |        |
|--|--------|
| Items to Remember .....                | Pg. 1  |
| Your Gator Experience Starts Here..... | Pg. 2  |
| Transfer Planning.....                 | Pg. 3  |
| Enrollment .....                       | Pg. 4  |
| Technology .....                       | Pg. 5  |
| Areas of Interest .....                | Pg. 6  |
| Funding your Journey .....             | Pg. 7  |
| Design your Schedule .....             | Pg. 8  |
| Academic Advising .....                | Pg. 9  |
| Academic Resources .....               | Pg. 10 |
| College Expectations .....             | Pg. 11 |
| Quarterly Enrollment Timeline .....    | Pg. 12 |
| College Policies .....                 | Pg. 13 |
| Your Gator Experience .....            | Pg. 14 |
| Balancing your College Life.....       | Pg. 15 |
| Student Support Services .....         | Pg. 16 |
| Campus Services .....                  | Pg. 17 |
| Campus Safety .....                    | Pg. 18 |
| Getting to Campus.....                 | Pg. 19 |
| Main Campus Map .....                  | Pg. 20 |



# WELCOME TO GREEN RIVER COLLEGE

Welcome to Green River College! On behalf of our faculty, staff and administrators, I want to thank you for considering Green River College as your educational partner and the pathway to your educational and career goals. We look forward to working with you each step of the way!

Green River College is a place that empowers all students from diverse backgrounds to navigate their educational and career pathways. Whether your goal is career and technical training, academic transfer, gaining skills to enhance your current employment opportunities, or enriching your life through life-long learning, we have a place for you at Green River College. Our College is known for student engagement, student-faculty interactions and supportive learning environments. We provide a caring, supportive and nurturing learning community where dedicated and knowledgeable faculty and staff are committed to your future and success.

For over 50 years, Green River College has had a tremendous impact on our vibrant surrounding communities serving the citizens, local industry and above all else, the students of South King County. As our community has globally expanded Green River College has become a top destination for many international students. Our College's success is demonstrated through the thousands of students who find a home at Green River College every year and successfully go on to achieve their educational and career goals for employment both inside and outside the state of Washington. I know that you can be part of this story of success as we support you to achieve your dreams.

To learn more about the College, services for students, and programs please visit and explore our website at [greenriver.edu](https://greenriver.edu). We are eager to meet you!

Best wishes for your success with your future educational, career, and personal goals.



President, Dr. Suzanne Johnson

YOU  
HAVE A  
PLACE  
HERE

# ITEMS TO REMEMBER



## COMPLETE THE FOLLOWING TASKS BEFORE THE START OF THE QUARTER:

- » Memorize your ctcLink ID.
- » Look up your GRC student email address at [greenriver.edu/studentemail](https://greenriver.edu/studentemail).
- » Visit [greenriver.edu/navigate](https://greenriver.edu/navigate) to log in and download the Navigate360 Student app.
- » Locate your advisor in Navigate360.
- » Make sure your program of study in Navigate360 is correct. Contact your advisor if you need to make changes.
- » Familiarize yourself with the common acronyms list to the right.

## COMMON ACRONYMS

- AAR** – Academic Advisement Report  
**AC** – Auburn Center  
**ASGRC** – Associated Students of Green River College  
**CCA** – Campus Corner Apartments  
**CTE** – Career & Technical Education  
**DSS** – Disability Support Services  
**ENM** – Enumclaw  
**ELL** – English Language Learning  
**EVF** – Enrollment Verification Form for Running Start  
**FAFSA** – Free Application for Federal Student Aid  
**FERPA** – Family Educational Rights and Privacy Act  
**GPA** – Grade Point Average  
**GRC** – Green River College  
**IP** – International Programs  
**KC** – Kent Campus  
**MESA** – Mathematics, Engineering, Science Achievement  
**MNSO** – Military New Student Orientation  
**NSAE** – New Student Advising and Enrollment  
**ODEI** – Office of Diversity, Equity and Inclusion  
**RAP** – Running Start, Advising, and Planning session for Running Start students  
**QER** – Quarterly Enrollment Request  
**RAC** – Recreation & Athletic Center  
**SU** – Mel Lindbloom Student Union  
**SA** – Student Affairs & Success Center  
**SAP** – Satisfactory Academic Progress  
**TRiO** – Federal program that offers services to increase opportunities for academic success for first generation, low income, and/or students with disabilities.  
**TS** – Transitional Studies  
**WASFA** – Washington Application for State Financial Aid

### STUDENT EMAIL ADDRESS

### PROGRAM OF STUDY

### ADVISOR



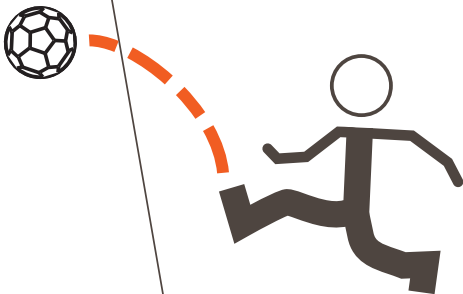
# YOUR GATOR EXPERIENCE STARTS HERE

By joining the Green River community, you are taking the next step to further your personal growth and education. Consider the following as you move towards graduation:

Take advantage of the opportunity to **EXPLORE** new subjects and pursue exciting career paths.



Create a **COMMUNITY** at Green River by getting involved in campus activities. Surround yourself with people who support you.



Your **WELLBEING** matters. Remember that your mental, physical and emotional wellbeing is an important aspect in being a successful student.

# TRANSFER PLANNING

## EXPLORE

### DISCOVER POTENTIAL CAREER PATHS

Schedule an appointment with a Career Specialist to review assessment options.

## PLAN

### CREATE YOUR EDUCATIONAL PLAN

- » Schedule an appointment with your advisor through Navigate to create a long-term plan for your program.

## APPLY

### APPLY TO UNIVERSITIES

- » Connect with an admissions advisor at the universities you want to attend.
- » Be aware of university and program admissions deadlines.



**ACTION ITEM:** Check out the areas of interest Green River offers on page 5 of this guide.





# ENROLLMENT

## ENROLLMENT

Students enroll in classes online in ctcLink or MyGreenRiver. Review your account prior to your assigned enrollment time. Contact the appropriate office to take care of any holds that prevent your ability to enroll in classes.

## WHEN TO ENROLL

Current and returning students are issued an enrollment date based on total credits earned at GRC. Students may enroll on or after this date. Check ctcLink each quarter for your assigned date/time.

## ONLINE ENROLLMENT

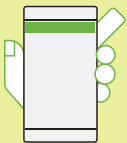
Students may add classes through the third day of the quarter for fall, winter, and spring quarters. Beginning the fourth day of the quarter, students must get instructor permission for each course they wish to add. The deadlines for summer quarter are one day sooner than other quarters.

## SCHEDULE CHANGES

Please check in with your advisor and funding source before adding or dropping classes. Review Academic Dates and Deadlines on the GRC calendar.  
[greenriver.edu/otr](http://greenriver.edu/otr)



**ACTION ITEM:** Review ctcLink tutorials online at [my.greenriver.edu](http://my.greenriver.edu)



**MY GREEN RIVER** puts all enrollment tools and more at your fingertips. Download the ctcLink mobile app to get all the features of My Green River on your phone.  
[my.greenriver.edu](http://my.greenriver.edu)



# TECHNOLOGY



## TECH PLATFORMS TO USE

Green River uses a few key pieces of technology to help you stay organized, enroll in classes, communicate, and complete courses. Be sure to use each of these regularly.

### NEED HELP WITH TECHNOLOGY?

If you have trouble accessing any of these resources, please reach out to the Student Technology Support Desk. They can also help with Office 365! It's best to visit them in the virtual lobby; they're also available in-person at the Main Campus and at the Kent Campus.



#### **ACTION ITEM:**

**Download the apps:**

- » *ctcLink*
- » *Navigate360 Student*
- » *Outlook*
- » *Canvas*

### ctcLINK/MY GREEN RIVER

ctcLink is the official system of record for all your information as a student at Green River and any community & technical college you attend in Washington State.

#### **KEY FUNCTIONS:**

- » Enroll in classes/change schedule
- » Pay fees
- » View/accept financial aid
- » Get unofficial transcript
- » Track grad requirements

### NAVIGATE360

Navigate360 is your one-stop shop for keeping things organized and on track for graduation.

#### **KEY FUNCTIONS:**

- » Make appointments
- » View schedule and course history
- » Find resources
- » Plan future courses
- » Keep track of important dates

### STUDENT EMAIL

Access your GRC student email at [greenriver.edu/studentemail](https://greenriver.edu/studentemail). You can look up, log into, or reset your password on this website. Your student email is primary way we communicate important information.

#### **KEY FUNCTIONS:**

- » Check email weekly
- » Communicate with faculty & staff
- » Receive important reminders

### CANVAS

Canvas is GRC's online classroom where instructors share course materials, update grades, facilitate discussion, and where you submit assignments and complete the course. PRO TIP: Classes do not show up in Canvas until after noon the first day of the quarter.

#### **KEY FUNCTIONS:**

- » View My GRC Backpack to get ready for the first day
- » View syllabus and complete course assignments
- » Communicate with instructors
- » Track grades during the quarter



# AREAS OF INTEREST

## AREAS OF INTEREST

GRC offers seven academic and career pathways, opportunities to Study Abroad, and resources if you're undecided. Find your pathway below to enter the workforce immediately after graduation, or pursue further study at a university or through one of our bachelor's programs.

### BUSINESS & ENTREPRENEURSHIP

Whether your goal is in management, entrepreneurship, accounting, or business administration, we'll help you reach your dreams and open doors to countless exciting fields.

### EDUCATION, LAW, & SOCIAL SCIENCES

Explore careers in Criminal Justice, Education, American Ethnic Studies, Anthropology, Economics, Geography, History, Political Science, Psychology, and Sociology.

### HIGH SCHOOL, COLLEGE PREP, & ELL

Whether you're looking to learn English, complete your high school diploma, prepare for your GED, or get ready for college-level courses, Green River College is your gateway to success.

### FINE ARTS & HUMANITIES

This pathway prepares you for your future in an ever-changing world to be a successful global citizen through creative problem-solving and intellectual exploration.

### HEALTHCARE & WELLNESS

Green River College offers programs to prepare you for in-demand roles in schools, clinics, hospitals, and fitness centers.

### SCIENCE, TECHNOLOGY, ENGINEERING, & MATHEMATICS (STEM)

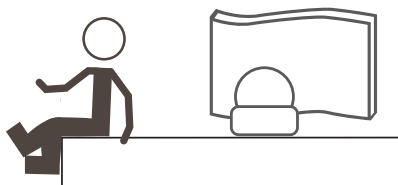
The STEM pathway will help you understand the world through observation and experimentation. Whether you dream of discovering new medicines, creating cutting-edge software, or addressing global warming, we'll prepare you for an exciting journey of scientific exploration.

### SKILLED TRADES, INDUSTRIAL TECHNOLOGY, AVIATION, AND NATURAL RESOURCES

Whether you aspire to work with your hands as an automotive mechanic, welder, carpenter, machinist, or mechatronics technician, launch a career in aviation as a pilot or air traffic controller, or protect our natural resources as a forestry technician, you will be empowered with the skills needed for a fulfilling career.

### UNDECIDED?

Utilize a range of resources to help you explore, plan, and move forward with confidence.



# FUNDING YOUR JOURNEY



Funding is an important aspect of attending college. Learn more about the following funding options at [greenriver.edu/payforcollege](https://greenriver.edu/payforcollege).

## WORKFORCE

Workforce Education administers programs that provide funding to cover some or all of tuition costs for students who intend on studying a Career and Technical education program and meet additional qualifications. A number of our programs also assist with books, fees, and, in some cases, educational supplies. See if you are eligible by completing a brief survey at [startnextquarter.org](https://startnextquarter.org).

## RUNNING START

Running Start students are not eligible for FAFSA/WASFA. However, a fee waiver and book loan program is available to those eligible. [greenriver.edu/runningstart](https://greenriver.edu/runningstart)

## VETERAN BENEFITS

Students eligible for VA benefits may be certified to receive benefits to pay for college. Get connected with Veteran Services to start the process as soon as possible. For more information, visit [greenriver.edu/veterans](https://greenriver.edu/veterans).

## PAYMENT PLAN

A payment plan is a convenient way for students to pay tuition in installments. Students can enroll in the payment plan option through the Financial Account Tile in ctcLink. Be mindful of the payment deadlines each quarter!

## FINANCIAL AID

Financial assistance is offered by the State of Washington and the federal government to qualifying students. This aid can assist with educational expenses, such as tuition and fees, books and supplies, and other costs of attendance. Aid may include scholarships, grants, loans, and work study.

### FAFSA

For eligible U.S. citizens, permanent residents, and other qualifying statuses including students of the Marshall Islands, Federated States of Micronesia and Palau, and certain other refugee and asylee statuses.

To apply:  
Submit FAFSA application at [fafsa.gov](https://fafsa.gov).

### WASFA

The Washington Application for State Financial Aid is a free application for state financial aid for students who are not eligible for federal aid because of immigration status, including undocumented students.

Determine your eligibility:

Submit WASFA application at [wsac.wa.gov/wasfa](https://wsac.wa.gov/wasfa).

» Complete the WASFA Questionnaire at

» [wsac.wa.gov/WASFAelig](https://wsac.wa.gov/WASFAelig)

Applications open for the following school year on October 1st of each year. Apply early using the FAFSA or WASFA!

### CHECK YOUR FINANCIAL AID STATUS

» Online in My Green River under the Financials Menu

» Phone: 253-288-3392

» Email: [finaid@greenriver.edu](mailto:finaid@greenriver.edu)

### SCHOLARSHIPS

The Green River Foundation offers over 300 scholarships based on program, merit, need, as well as general and transfer scholarships. By submitting one application, you are applying for all 300 scholarships. Applications are due in April and October.



**ACTION ITEM:** Fill out FAFSA or WASFA applications, search and apply for scholarships, connect with Veteran Services.





# DESIGN YOUR SCHEDULE

Green River follows an 11-week quarter schedule. In addition to classroom time, your courses will require a significant amount of preparation and study time outside of the classroom. While advisors are valuable in helping you select classes, it is important to reflect on what a manageable course load would look like for you.

## Balance

- » Schedule a variety of the different area requirements – try to take no more than 2 courses in the same area.
- » For every hour in class, expect an average of 2 hours of study time outside of class.  
Example: a 5-credit course = 5 hours in class, and 10 hours of study and preparation time outside of the classroom.
- » A typical full-time course load is 12-15 credits.
- » Try to take two courses you feel confident in, and one course that you think will be a little more difficult for you.

## Structure

- » Understand course sequencing (is there a specific order that classes need to be taken?).
- » Meet with your advisor to create an educational plan to ensure you are completing the necessary courses.



**ACTION ITEM:** Check your academic progress and plan courses with the What-If Audit Tool in My Green River.

## Things to Consider:

- » Think about what courses you found interesting at your previous school(s), or topics you would like to explore further.
- » If you have determined your intended major, are there any required courses necessary to complete before being accepted into your desired program?
- » Have you completed college credits at another institution? Be sure to submit your official transcripts to the Office of the Registrar along with a transcript evaluation form if you haven't done so already!
- » What courses are required for your intended degree?

| SECTION/CLASS NUMBER | COURSE NAME | MODALITY | LOCATION | DAYS/TIME | CREDITS |
|----------------------|-------------|----------|----------|-----------|---------|
|                      |             |          |          |           |         |
|                      |             |          |          |           |         |
|                      |             |          |          |           |         |
|                      |             |          |          |           |         |
|                      |             |          |          |           |         |



# ACADEMIC ADVISING

## WORKING WITH YOUR ADVISOR

Connect with your advisor often, as they are a helpful resource throughout your educational experience. Advisors can assist in helping you develop your educational plan, confirm your academic progress, and connect you to various campus resources to help you navigate the college.



**ACTION ITEM:** Look up your advisor and schedule an appointment to create an educational plan.

## CAREER AND ADVISING

Student Affairs & Success Center, SA 104

The Career and Advising Center aims to provide services to inform, support and encourage individuals to become self-directed in the educational planning process.

## INSTRUCTIONAL

Access [Navigate360](#) to view your advisor and schedule an appointment with them.

Students are typically assigned to a faculty advisor or to an advisor in their program by their 2nd quarter or once they have declared their major.

## MAC: MASTER ACHIEVER CENTER

Student Affairs & Success Center, SA 270

The Master Achiever Center's goal is to support students who face barriers in their education. The MAC offers assistance, information, and guidance to students who are planning to transition on to other programs, especially those students in GED®/TS/HS21+ and ELL classes.

## MESA

Student Affairs & Success Center, SA 126

The MESA program offers specialized advising. See next page for program description.

## RUNNING START

Student Affairs & Success Center, SA 135

Running Start Advisors serve as a resource and advocate for RS students, assisting them in becoming self-directed in the educational planning process.

## TRIO

Student Affairs & Success Center, SA 211


The TRiO Program offers specialized advising. See next page for program description.

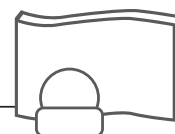
## VETERAN SERVICES

Student Affairs & Success Center, SA 225

Veteran Services has an advisor to support veterans and military-connected students to navigate their educational and career pathway options, ensuring their plan aligns with funding requirements.

## ACADEMIC ADVISING MILESTONES FOR STUDENTS

| WHEN?   | WHAT DO I NEED TO DO WITH MY ADVISOR?  |
|---|--|
| <b>FIRST QUARTER</b><br>(0 - 30 credits)  | <ul style="list-style-type: none"> <li>» Meet with a career specialist if you're still exploring.</li> <li>» Create an educational plan (Ed Plan) to map out your program of study.</li> <li>» Take career assessments to explore academic and career goals.</li> </ul>  |
|  <p><i>What if I change my program?</i></p> | Meet with your assigned advisor to discuss any changes in your Educational Plan.   |
| <b>FIRST YEAR</b><br>(30 - 45 credits)  | <ul style="list-style-type: none"> <li>» Continue to update and refine your Ed Plan.</li> <li>» Track your degree and certificate progress each quarter to make sure you are staying on track using the What-If Report in My Green River.</li> <li>» Research universities if you plan to transfer after Green River, attend transfer events and workshops, identify application deadlines and major prerequisites.</li> </ul> |
| <b>SECOND &amp; THIRD YEARS</b><br>(46 - 90 credits)  | <ul style="list-style-type: none"> <li>» Continue to update and refine your Ed Plan.</li> <li>» Track your degree and certificate progress each quarter to make sure you are staying on track (What-If Report).</li> </ul>   |
| <b>TWO QUARTERS AWAY FROM FINISHING</b>   | Submit your Intent to Graduate form; make sure you are staying on track for degree completion.   |





# ACADEMIC RESOURCES

## SUPPORT SERVICES

### TRIO STUDENT SUPPORT SERVICES

**Student Affairs & Success Center, SA 211**

TRiO is a program for first generation, low-income, and/or students with disabilities. Through specialized advising and support services, TRiO students find more success at GRC and are more likely to transfer to their next college.

### MESA

**Student Affairs & Success Center, SA 126**

The MESA Program (Mathematics, Engineering, Science Achievement) provides historically underrepresented students with academic support and professional development for students in pursuit of STEM (science, technology, engineering and math) bachelor's degrees.

### DISABILITY SUPPORT SERVICES

**Student Affairs & Success Center, SA 210**

The Disability Support Services (DSS) Office works with students with disabilities to provide reasonable accommodations for students to achieve success at Green River. Students working with DSS have access to specialized advising. Visit [greenriver.edu/dss](http://greenriver.edu/dss) to learn more.

### PONO PROGRAM (Asian American Native Hawaiian Pacific Islander Program)

**Mel Lindbloom Student Union, SU 240**

Pono is a program that helps students stay on their path in college to reach their goals. The program helps students develop their identity and build self-confidence. Pono aims to increase academic and mental health support necessary for success. The program provides culturally competent, holistic assistance to increase academic and career achievement.

## TUTORING RESOURCES

All tutoring resources web pages are listed in one convenient place:  
**[greenriver.edu/tutoring](http://greenriver.edu/tutoring)**

### TUTORING & RESOURCE CENTER

**The Holman Library, 2nd floor**

If you need help keeping up with your classes, you can get tutoring free of charge. Computers and learning resources are also available.

### LANGUAGE CENTER / LAB

**Salish Hall, SH 112 and SH 150**

Receive individual help with Foreign Language class components in any language offered at Green River.

### MATH LEARNING CENTER

**Cedar Hall, CH 313**

The Math Learning Center offers drop-in tutoring, supplemental learning resources, and individual and group study options. Graphing calculator rentals are available too!

### PUBLIC SPEAKING CENTER

**Holman Library, HL 150**

Make an appointment on the Public Speaking Center Website to get individual help with oral presentations.

### WRITING AND READING CENTER

**Rutkowski Learning Center, RLC 173**

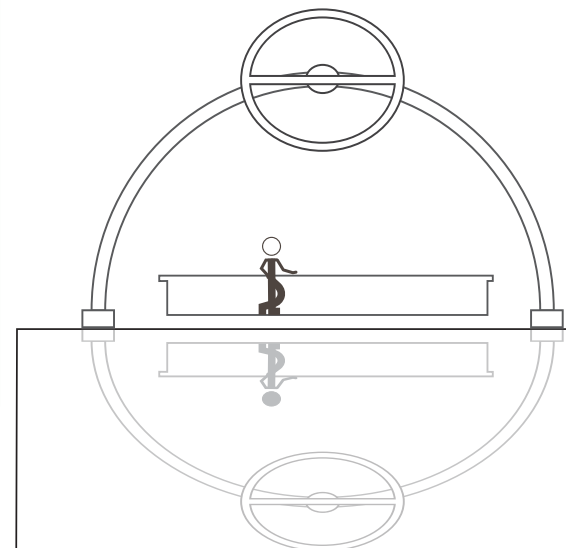
The Writing Center provides support for students working on writing assignments, cover letters, scholarship or college application essays, or other writing projects.

### LIBRARY

The Holman Library provides access to information and helps develop information literacy skills. Check out the resources available.

### E-LEARNING

Make sure you get to know how these hybrid classes work before the quarter starts.



# COLLEGE EXPECTATIONS



## START STRONG

It's important for college students to make a good impression with professors and peers from the start. Here are some important tips to help start your college career well.

### 1. BE PUNCTUAL

Be on time to class and log in to Canvas for your online classes every day, especially on the first day of the quarter. Communicate with your instructor as early as possible if you run into any difficulties that impact your attendance or ability to submit assignments on time.

### 2. YOUR INSTRUCTOR

Instructors at Green River come from a variety of backgrounds and expertise. They will introduce themselves to you the first day of the quarter. Some may introduce themselves as "Professor," "Doctor," or by their first name. When in doubt, start with "Professor" and their last name.

### 3. BE PREPARED

- » Take notes on lectures and readings and review often.
- » Keep up on all assignments and activities.
- » For every credit you're enrolled in, plan to spend two hours outside of class on homework, studying, etc.

### 4. BE ATTENTIVE

- » Turn off or silence your cell phone before class begins.
- » Tell your instructor if you must arrive late or leave early.
- » Visit with your instructor during their office hours if you need assistance with course content.
- » Read instructions carefully to make sure you know what's required for each assignment.
- » Make sure you attend classes regularly, come prepared, and participate in class.

### 5. ONLINE COMMUNICATION

Students should use their GRC student email when communicating with faculty and staff. Be sure to include your full name in your message (and not in the subject line).

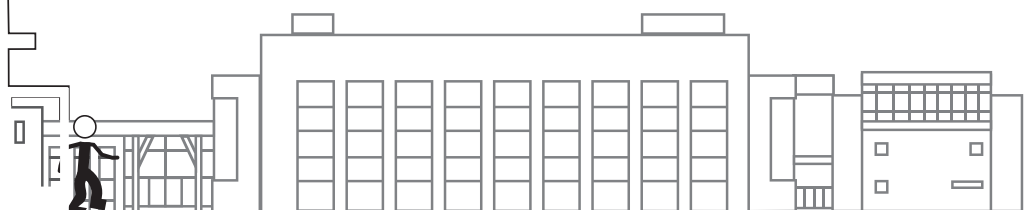
*Find instructor and staff contact information at [My Green River](#)*

### 6. POLICIES

Read the syllabus for each class so you know how to contact your instructor, their grading scale, policy on late work, and plagiarism. The syllabus is like a user's manual for each class. Keep it handy!



**ACTION ITEM:** Consider taking a study skills class to help with note-taking and success strategies. Your advisor or instructor may be able to assist too!



# QUARTERLY ENROLLMENT TIMELINE

## PREPARE FOR ENROLLMENT

### PLAN AHEAD!

- » Check out the [Academic Calendar](#) to know when enrollment begins for each quarter.
- » My Green River's Enrollment tab has your assigned enrollment date.

## KNOW WHAT CLASSES TO TAKE

- » Schedule an appointment with your advisor in [Navigate360](#) to develop/revise your educational plan.
- » Review your What-If Report every quarter to make sure you are on track to complete your degree.

## PLAN YOUR SCHEDULE

- » Use the Class Search tool in My Green River to find the details of classes offered, course description, and enrollment requirement for each class.
- » Add classes to your shopping cart before enrollment opens; just remember to add them to your schedule when it's time!

*Tip: If you add yourself to a waitlist, be sure to add a backup class (different than what you're waitlisted for) in case you don't get into the waitlisted class.*

## ENROLL IN CLASSES

### DON'T WAIT!

Classes fill up quickly, so sign up for classes as soon as you can.

*Tip: Location, location, location! GRC has 4 campuses so make sure you know where your class will be.*

## PAY FOR CLASSES

Once enrolled in classes, be sure to pay your tuition and fees by the date posted in the [Academic Calendar](#). If you receive any kind of aid, check with your funding source to make sure you have everything in place.

*\*Unpaid tuition puts you at risk of losing your classes, so be sure to pay right away.*



# COLLEGE POLICIES

## FERPA

The Family Educational Rights and Privacy Act of 1974 (FERPA) requires Green River College, with certain exceptions, to obtain written consent prior to the disclosure of personally identifiable information from a student's education record.

Want someone to be able to access information about your financial aid, records, or other area of interest? There is a FERPA release form that you will need to fill out to give permission for your information to be shared with a third party.

## TRANSFERRING CREDITS TO GRC

AP, IB, PREVIOUS COLLEGE  
CREDIT

If you have earned college credit through Advanced Placement (AP), International Baccalaureate (IB), College in the High School (CHS), Career Technical Education (CTE) Dual Credit, or from another college, it may be transferrable to Green River.

## ACADEMIC STANDARDS POLICY

Faculty and staff are committed to student success and academic progress. The academic standing of each Green River student is carefully monitored to support the full development of each student's academic potential. Students must maintain above a 2.0 quarterly and cumulative grade point average.

An advising office will connect with students who do not meet these standards to create a plan for success moving forward.

## RELIGIOUS HOLIDAY POLICY

Students are entitled to excused absences for reasons of faith or conscience, or for organized activities conducted under the auspices of a religious denomination, church or religious organization.

Students must request the absence by contacting one of the Deans of Student Affairs within the first two weeks of the quarter. Once approved, students will provide their instructor(s) with a document approving the excused absence.

## SMOKE/ VAPE FREE CAMPUS

The use, distribution or sale of tobacco, including any smoking device, or carrying of any lighted smoking instrument on Green River premises is prohibited.

This includes, but is not limited to, all Green River sidewalks, parking lots, landscaped areas, recreational areas and buildings on any Green River property and in Green River owned, rented or leased vehicles.

## CLASSROOM CONCERNS

If you have a concern about how your instructor calculated your grade or applied a course policy, or if you experience a level of discomfort that impacts your success in class, you can pursue action through the Instruction Student Complaint Process.



### ACTION ITEM:

Review the  Student  
Code of Conduct





# YOUR GATOR EXPERIENCE

FIND  
YOUR  
PLACE

CREATE  
YOUR OWN  
EXPERIENCE

Create your signature experience!  
Look for opportunities inside and  
outside of the classroom.

There is something for you at Green River. Lifelong connections are formed both inside and outside the classroom. We offer a wide range of opportunities to become involved on and off campus. Participation in program activities and events provides a way for you to build community.

🔗 **Student Life** manages all of our clubs on campus and also provides an opportunity for students with shared interests to create their own clubs. Creating a club on campus not only provides students a chance to create their legacy at Green River, but also allows students to take on leadership roles.

The 🔗 **Office of Diversity, Equity, and Inclusion (ODEI)** serves all students in culturally relevant ways to empower them to succeed in their educational journeys. Their aim is to enhance, educate, encourage and engage the diverse Green River population to create their own narratives and define their legacies through enriching workshops, presentations, and cultural activities throughout the year.

The 🔗 **Green River Athletic Department** works to enrich the campus community through the recruitment of uniquely talented students and to foster positive public relations through interscholastic competition, academic integrity and character enrichment.

Check out 🔗 [GRC's opportunities](#)

## Take your education beyond Green River!

🔗 **Study abroad** allows you to take courses toward the completion of your degree while immersing yourself in the cultures of some of the world's most fascinating places. Each quarter provides a different opportunity to study in another country with a group of your fellow Green River students and faculty.

# BALANCING YOUR COLLEGE LIFE



What does a week in your life look like? This time management grid is a helpful tool to see what you have to do each week. Use this to try to find a balance between academic and non-academic obligations.

Create your schedule before each quarter so that you can see what your week really looks like. Remember that you need time for self-care and that there are campus resources to help you.

| TIME     | MONDAY | TUESDAY | WEDNESDAY | THURSDAY | FRIDAY | SATURDAY | SUNDAY |
|----------|--------|---------|-----------|----------|--------|----------|--------|
| 7:00 AM  |        |         |           |          |        |          |        |
| 8:00 AM  |        |         |           |          |        |          |        |
| 9:00 AM  |        |         |           |          |        |          |        |
| 10:00 AM |        |         |           |          |        |          |        |
| 11:00 AM |        |         |           |          |        |          |        |
| 12:00 PM |        |         |           |          |        |          |        |
| 1:00 PM  |        |         |           |          |        |          |        |
| 2:00 PM  |        |         |           |          |        |          |        |
| 3:00 PM  |        |         |           |          |        |          |        |
| 4:00 PM  |        |         |           |          |        |          |        |
| 5:00 PM  |        |         |           |          |        |          |        |
| 6:00 PM  |        |         |           |          |        |          |        |
| 7:00 PM  |        |         |           |          |        |          |        |
| 8:00 PM  |        |         |           |          |        |          |        |
| 9:00 PM  |        |         |           |          |        |          |        |
| 10:00 PM |        |         |           |          |        |          |        |

| Responsibilities  | Weekly Time Commitment |
|---|------------------------|
| <b>Class 1</b><br>Budget two hours study time for each credit |                        |
| <b>Class 2</b><br>Budget two hours study time for each credit |                        |
| <b>Class 3</b><br>Budget two hours study time for each credit |                        |
|   |                        |
|   |                        |

- OTHER TIME COMMITMENTS TO CONSIDER
- » Sleep
  - » Work
  - » Family/Friends
  - » Campus/Community Involvement
  - » Commute
  - » Self-Care



# STUDENT SUPPORT SERVICES

## COUNSELING

**Student Affairs & Success Center, SA 230**

Counseling Services provides short-term mental health counseling and self-care/wellness education to Green River students. Workshops and consultation services are offered for staff, faculty, and student organizations. Services are free and confidential.

## GATOR PANTRY

**Student Affairs & Success Center, SA 122**

Need a snack while on campus or a few meals? The Gator Pantry is available to ALL Green River students, which serves to address short term food insecurity on campus.

## CENTER FOR TRANSFORMATIONAL WELLNESS

**Student Affairs & Success Center, SA 122**

The Center for Transformational Wellness (CTW) is here to support the social and emotional wellness of all students. The CTW provides support to students in recovery and survivors of Interpersonal Violence, and survivors of interpersonal violence, and offers prevention programming for the whole college community. Come by to borrow a board game, pick up sexual health supplies, or talk with a staff member about resources and support.

## INDIGENOUS STUDENT SUCCESS CENTER

**Student Affairs & Success Center, SA 227**

The Indigenous Student Success Center (ISSC) provides a welcoming space for Native students to connect, socialize, and study, while also facilitating access to campus and community resources to help them succeed in their academic journey, thrive in their college experience, and fulfill their goals.

The ISSC offers personalized advising for Indigenous students to navigate academic, career, and personal challenges. Students can also engage in conversations, share their voice, and explore leadership opportunities through the Native American Student Organization (NASO).

## VETERAN SERVICES

**Student Affairs & Success Center, SA 224 & SA 225**

Veteran Services is a resource for all veterans and military-connected students that provides support and referrals throughout campus and our community. Through the Center of Excellence for Veteran Student Success grant, a dedicated Educational Planner is available to support eligible students.

The Veterans' Lounge serves as a safe space for veterans and military-connected students to find community, support, and resources. Here, students can decompress as they adjust from military to student/civilian life. Students have access to:

- » Computers
- » Study space
- » Snacks and hydration station
- » Workshops, events, and more!

## BENEFITS HUB

**Student Affairs & Success Center, SA 122**

Balancing a combination of school, work, and life can be difficult. If you're working as hard as you can and still have a hard time keeping up with the rising cost of living, the Benefits Hub may be able to help. In partnership with the United Way of King County, the Benefits Hub helps you get by, get ahead, and stay ahead so you can achieve your college and career goals.

The Benefits Hub Coaches can assist students with:

- » Emergency housing information
- » Savings and spending plans
- » How to open and use a bank account
- » Financial aid and scholarship options
- » Tax preparation basics and tax rights
- » Helping pay for groceries, bus fare, utility bills, and more
- » Defaulting on a loan
- » Building and understanding credit
- » Transportation

## OTHER RESOURCES

24-Hour Crisis Line

1-866-427-4748

Suicide and Crisis Lifeline 988



# CAMPUS SERVICES



## CAMPUS CORNER APARTMENTS

Part of your college experience is the communities you develop while completing your studies. If you live on campus, you will spend less time commuting, which allows more time for studying and building your social network. Being so close to campus also gives you more opportunities to participate in campus activities, and offers you easy access to campus resources. Living with a diverse group of people fosters an opportunity to expand your social knowledge outside of the classroom through interactions with people of different identities, cultures, beliefs and experiences.

## GATOR GRILLE

Mel Lindbloom Student Union

Green River offers a variety of food options on campus for students, employees and visitors. From made-to-order sandwiches, to wood-fired pizza, and of course, plenty of coffee at our two coffee stands!

## CAMPUS BOOKSTORE

Mel Lindbloom Student Union

Our campus bookstore provides a convenient way to purchase your course materials and supplies. In addition, the bookstore offers a variety of products and services:

- » Faxing
- » UPS delivery
- » Special orders
- » Educational software
- » Student ID cards
- » Gift cards
- » Balloon bouquets
- » Campus apparel
- » And more!

## RECREATION AND ATHLETICS CENTER (RAC)

Mel Lindbloom Student Union

The Recreation and Athletics Center provides a free, safe and healthy outlet for Green River students to exercise and play sports. Options include:

- » Group fitness classes
- » Weight training equipment
- » Cardio equipment
- » Intramural sports (just for fun!)





A composite image for the header. The left side shows a modern brick building with large windows and a glass entrance, surrounded by greenery and a paved walkway. The right side is a solid green background with the text 'CAMPUS SAFETY' in white.

# CAMPUS SAFETY

## CAMPUS SAFETY

The Green River Campus Safety Department is committed to a comprehensive approach in providing a safe and inclusive community where students, faculty, staff and visitors may experience a sense of security and belonging.

Campus Safety can also help with general car issues such as jump-starting your vehicle, if you find yourself locked out of your car, or need assistance in replacing a flat tire.

### WHEN IN DOUBT, REPORT!

To help maintain a safe and secure campus, Green River College urges all members and visitors to file a report with Campus Safety when any criminal activity is suspected or there is a concern for the health and safety of others.

## GATOR ALERTS – CURRENT NOTIFICATIONS

Green River College and Campus Safety sends updates when there are immediate notifications of criminal activity, emergencies, or weather-related issues.



**ACTION ITEM:** Sign up for GRC Alerts to receive notifications of emergencies and weather-related issues.  
[greenriver.edu/alerts](https://greenriver.edu/alerts)

## HEALTH ALERTS

Green River College has established a plan for emergent health incidents. This plan includes working closely with emergency managers and local public health agencies in order to ensure safety and access to accurate information. For information on current health concerns in Washington State please refer to the Washington State Department of Health. State information along with more localized health department information can be found at the King County Health Department.

## CONTACT INFO

**CALL:**  
**(253) 288-3350**

**VISIT:**  
**SA 156**

**SIGN UP**  
[greenriver.edu/alerts](https://greenriver.edu/alerts)



# GETTING TO CAMPUS

## GREEN RIVER COLLEGE

### GENERAL PARKING

Parking on campus is FREE and fills up quickly, especially between 9 a.m. and noon, so leave yourself plenty of time to park and walk to class. We encourage every student to register their vehicle with Campus Safety.

### CAMPUS LOCATIONS

Green River has four campus locations: the Main Campus on Lea Hill in Auburn; the Enumclaw Campus in downtown Enumclaw; the Kent Campus at Kent Station; and the Auburn Center between Fred Meyer and Lowe's. Pay attention to the location when enrolling in classes!

### CARPOOL PARKING

Driving with friends? Green River has parking spots specifically for carpooling students. Check in with the campus safety booths at each entrance to get your free daily carpool pass.

### GUARANTEED PARKING

Guaranteed parking is available in parking lot P5. Quarterly passes may be purchased for \$100 in the Cashiers/Student Financials Office. Space is limited.

### TAKE PUBLIC TRANSPORTATION

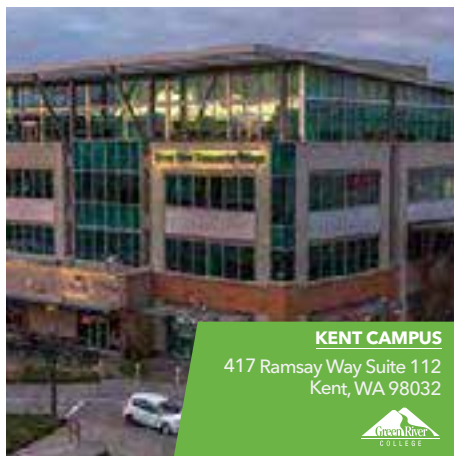
Each Green River campus is connected to public transit. Plan your trip to Green River by visiting [www.soundtransit.org/tripplanner](http://www.soundtransit.org/tripplanner).

Students under 18 ride free with their Youth ORCA card. The Benefits Hub can help all other students with applying for a reduced fare ORCA Lift card.



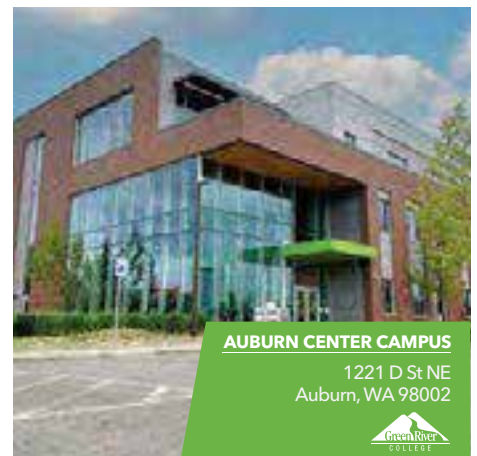
**ENUMCLAW CAMPUS**

1414 Griffin Ave,  
Enumclaw, WA 98022



**KENT CAMPUS**

417 Ramsay Way Suite 112  
Kent, WA 98032



**AUBURN CENTER CAMPUS**

1221 D St NE  
Auburn, WA 98002





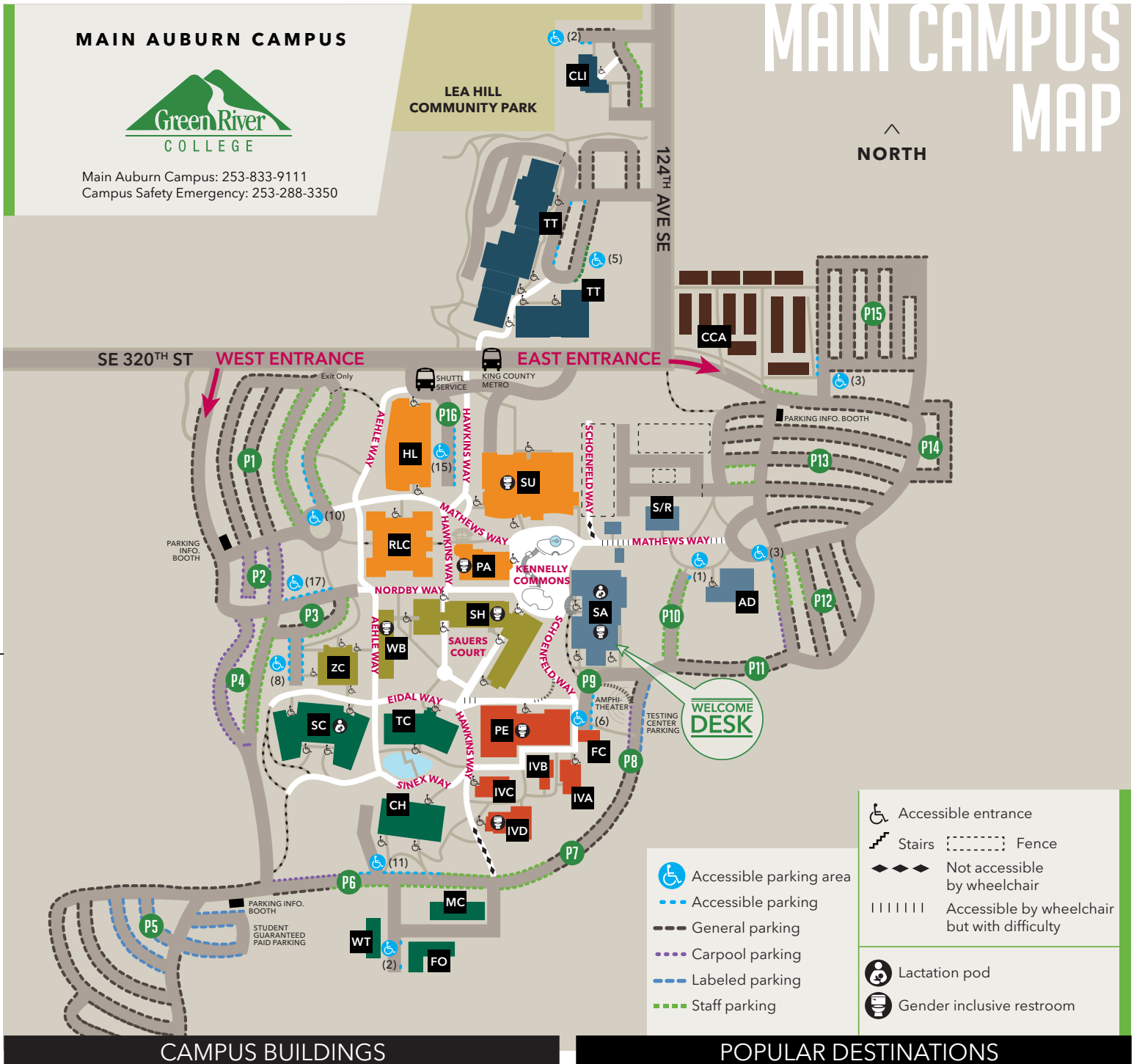
## MAIN AUBURN CAMPUS



Main Auburn Campus: 253-833-9111  
Campus Safety Emergency: 253-288-3350

# MAIN CAMPUS MAP

NORTH



## CAMPUS BUILDINGS

## POPULAR DESTINATIONS

|                                     |     |   |        |                             |    |                               |     |
|-------------------------------------|-----|---|--------|-----------------------------|----|-------------------------------|-----|
| Administration Building             | AD  | McIntyre Int'l Village A-D                              | IV A-D | Campus Information & Tours  | SA | Math Learning Center          | CH  |
| Bleha Center for Performing Arts    | PA  | Mel Lindbloom Student Union                             | SU     | Placement & Testing Center  | SA | Office of the Registrar       | SA  |
| Campus Corner Apartments            |     | Physical Education Building                             | PE     | The Paper Tree Bookstore    | SU | Payroll                       | AD  |
| Student Housing                     | CCA | Rutkowski Learning Center                               | RLC    | Campus Safety               | SA | Recreation & Athletics Center | SU  |
| Center for Learning & Innovation    | CLI | Salish Hall   | SH     | Career & Advising Center    | SA | Speaking Center               | HL  |
| Cedar Hall                          | CH  | Shipping & Receiving                                    | S/R    | Conference Services         | SU | Student Financials            | SA  |
| Facilities Operations               | FO  | Student Affairs & Success Center                        | SA     | Continuing Education        | WT | Student Life                  | SU  |
| Fitness Center                      | FC  | Technology Center                                       | TC     | Disability Support Services | SA | TRiO Student Support Services | SA  |
| Holman Library                      | HL  | Trades Technologies                                     | TT     | Equity & Diversity Services | SU | Tutoring & Resource Center    | HL  |
| Maintenance Center                  | MC  | Washington Environmental Training Resource Ctr. (WETRC) | WT     | Financial Aid Office        | SA | Veteran Services              | SA  |
| Marv Nelson Science Learning Center | SC  | West Building   | WB     | Gator Grille/Gator Grind    | SU | Workforce Education           | SA  |
|                                     |     | Zgolinski Center  | ZC     | Helen S. Smith Gallery      | HL | Writing & Reading Center      | RLC |

This document is available in alternative formats to individuals with disabilities by contacting Disability Support Services at 253-931-6460; TTY 253-288-3359; or by email at [dss@greenriver.edu](mailto:dss@greenriver.edu). Green River College is an equal opportunity educator and employer. Learn more at [www.greenriver.edu/accessibility](http://www.greenriver.edu/accessibility).



**MAIN AUBURN CAMPUS**

12401 SE 320TH STREET  
AUBURN, WA 98092  
253-833-9111  
253-288-3359 TDD

**AUBURN CENTER**

1221 D STREET NE  
AUBURN, WA 98002  
253-288-3455

**ENUMCLAW CAMPUS**

1414 GRIFFIN AVENUE  
ENUMCLAW, WA 98022  
253-288-3400

**KENT CAMPUS**

417 RAMSAY WAY, SUITE 112  
KENT, WA 98032  
253-856-9595

**Official Non-Discrimination Statement**

Green River College does not discriminate on the basis of race, color, real or perceived national origin, age, perceived or actual physical or mental disability, pregnancy, genetic information, gender, sexual orientation, gender identity, marital status, creed, religion, honorably discharged veteran or military status, or use of a trained guide dog or service animal. Green River College prohibits discrimination on the basis of sex, sex-based harassment, and sex discrimination in any education program or activity that it operates, as required by Title IX and its regulations, including in admission and employment. Inquiries about Title IX may be referred to Green River College's Title IX Coordinator, the U.S. Department of Education's Office for Civil Rights, or both.

**Reporting**

Any employee, student, applicant, or visitor who believes that he, she or they have been the subject of discrimination or harassment should report the incident or incidents to the College's Title IX Coordinator identified below. If the complaint is against that Coordinator, the complainant should report the matter to the President's office for referral to an alternate designee.

- For all students, applicants, employees and public/visitors:

Korland Simmons, Equity Compliance Manager

Kent Campus 279

Phone: 253- 833-9111, ext. 3361

Email: [TitleIXcoordinator@greenriver.edu](mailto:TitleIXcoordinator@greenriver.edu)

The College encourages the timely reporting of any incidents of discrimination or harassment. Complaints may be submitted in writing or orally. For complainants who wish to submit a written complaint, complete the Discrimination Complaint Processing Form and submit the form to the Title IX Coordinator.

**Accessibility**

We are committed to providing access to all who visit, work, and study on campus. To receive the following information in an alternative format, students should contact Disability Support Services at: 253-931-6460; TTY 253-288-3359; or [dss@greenriver.edu](mailto:dss@greenriver.edu). Staff and faculty should contact [HR@greenriver.edu](mailto:HR@greenriver.edu).

**Publication Disclaimer**

Green River College has made reasonable efforts to provide information that is accurate at the time of publication. However, the college reserves the right to make appropriate changes in procedures, policies, calendars, requirements, program, courses, and fees. When feasible, changes will be announced prior to their effective dates, but the college assumes no responsibility for giving any particular notice of such changes. Nothing herein shall be construed to create any offer to contract or contractual rights.